



V A L C A N

The Defining Standard



COMPANY & PRODUCT OVERVIEW

Cladding Panels, Complete Systems,
Sheathing Boards & Subframe Systems



bsi.identify

Registered manufacturer 2023/24





Pictured: Bradstowe House, Harrow. VitraDual® - Colours: Cornish Granite & Riddle Grey.



OUR VISION

To lead the industry as an innovative and proactive organisation, consistently delivering non-combustible façade solutions, renowned for excellence of product, product support and superior customer service – the defining standard.



OUR MISSION

To be the market leader in non-combustible facades for high-rise buildings, through design and supply of A1 and A2 rated rainscreen cladding systems, that are easy to buy and fast to install.



OUR VALUES

At Valcan, we embody the values of respect, loyalty, honesty, innovation, responsiveness, and teamwork, delivering exceptional results that exceed expectations. Join us in shaping a better future.

CONTENTS

Who We Are / History	4
Why Choose Valcan / Our Strengths	5
Complete Cladding Systems	6-11
Products	12-27
– ProcellaPro® A1 Fibre Cement Building Board	14-15
– VitraFix® Cladding Subframe Systems	16-17
– VitraDual® A1 Aluminium Cladding Panels	18-21
– Ceramapanel® A1 Fibre Cement Cladding Panels	22-25
– Everlap® A1 Cladding Wood Grain Planks	26-27
Case Studies	28-43
Sustainability	44-45
CPD	46
Toolbox Talks	47

The information in this document is for guidance only. We do not accept liability or warrant its accuracy. It does not consider your project requirements and should not be relied upon. Please verify and approve all information with a qualified professional to ensure it meets your project's needs.

VALCAN, YOUR TRUSTED PARTNER IN A1/A2 NON-COMBUSTIBLE CLADDING SOLUTIONS



4 | VALCAN.CO.UK

WHO WE ARE

Valcan is the trading name of Fairview Europe Ltd and we are part of the Fairview global family. Valcan is a developer and manufacturer of rainscreen cladding systems working with clients, insurers, architects and contractors.

We deliver fully tested non combustible A1 /A2 (A2-s1,d0) certified solutions, paired with reliable and technically assured customer service.

With over 20 years of experience in the façade industry through Fairview's global network, we have established a leading position in the market and are now the preferred company by Architects, Contractors and Fabricators.

HISTORY

Valcan initiated its distribution of Vitrabond A2 Aluminium Composite material to the construction industry during the early 2000s. This effort was made possible through the unwavering support of Fairview Architectural, Australia - a partnership that remains robust to this day.

With a solid background in the façade industry spanning over two decades, Fairview Architectural initially catered to the rainscreen market with their flagship product, Vitrabond.

Presently, we offer a diverse range of 10 products, along with a range of complete cladding systems. Our commitment to providing exceptional customer service drives us to continuously improve our processes and offerings.

HUGE STOCKS. EXPERT KNOWLEDGE. FAST DELIVERY.

In excess of 1 million m2 of cladding materials supplied around the world per annum.



WHY CHOOSE VALCAN?

At Valcan, we do not design, fabricate, or install products ourselves. Instead, we have a network of trusted partners we collaborate with to ensure your project is completed to the highest standards of quality and safety. These partners, selected for their expertise, knowledge, and ability to deliver outstanding results, include designers, fabricators, and distributors sharing our commitment to quality, safety, and innovation.

We also have a network of installer partners, carefully chosen for their professionalism, reliability, and commitment to safety. Fully trained and accredited to install our products, they ensure your project is completed to the highest standards.

OUR STRENGTHS

Valcan is renowned for its exceptional dedication to providing top-tier, secure, and innovative solutions in the facade industry. Our principal products and systems boast non-combustibility, earning A1 /A2 fire ratings and setting the gold standard for rainscreen systems.

This commitment to quality is propelled by rigorous research and development, ensuring that every solution we deliver is expertly tailored to cater to each project's unique needs and demands. Whether you're undertaking a new build and recladding projects, Valcan guarantees optimal performance, safety, and integrity in every product.

We take pride in being a supportive partner to our customers, guiding them through each project phase and helping them achieve their objectives.

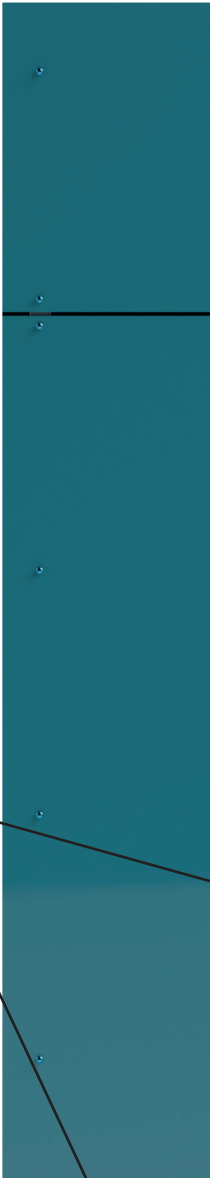
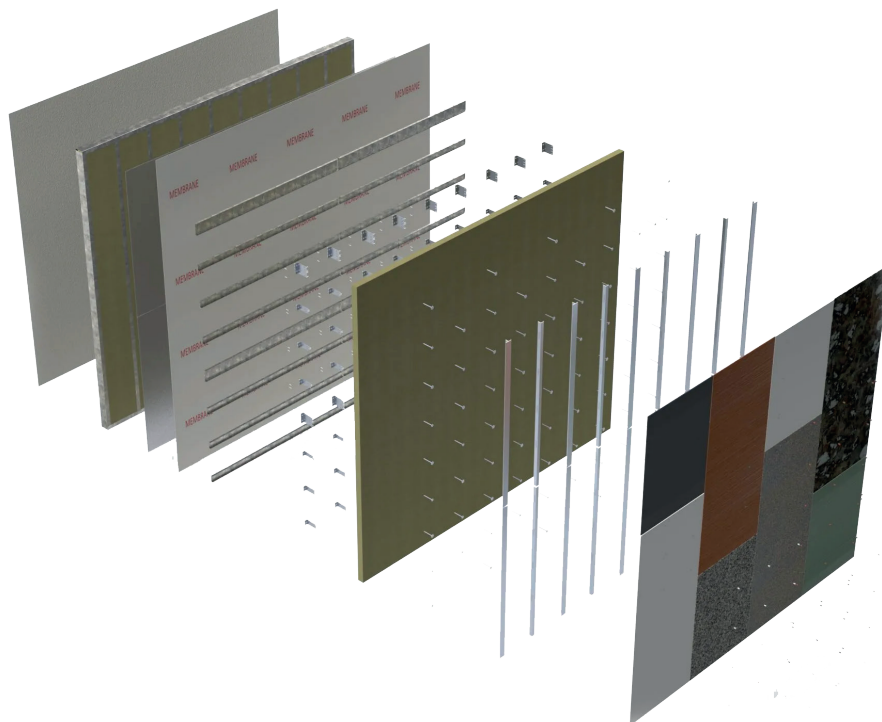


COMPLETE, ALL-IN-ONE CLADDING SYSTEMS

For over two decades, Valcan has been the trusted choice for clients seeking contemporary and natural-looking cladding panels. With an unwavering commitment to quality, we have consistently expanded our product range to meet evolving design demands.

Today, we take immense pride in offering a diverse selection of complete cladding systems, encompassing every element needed to achieve a flawless building envelope. Our systems include components, fixing assemblies, and more, tailored for both new build and recladding projects.

At Valcan, we understand the unique requirements of construction professionals. Our comprehensive approach integrates critical components, addressing diverse needs while adhering to the principles of the Building Safety Act 2022 and the Golden Thread of information. Compliance and building safety are at the forefront of everything we do.





STREAMLINED SOLUTIONS FOR EFFICIENT AND SUSTAINABLE CLADDING PROJECTS

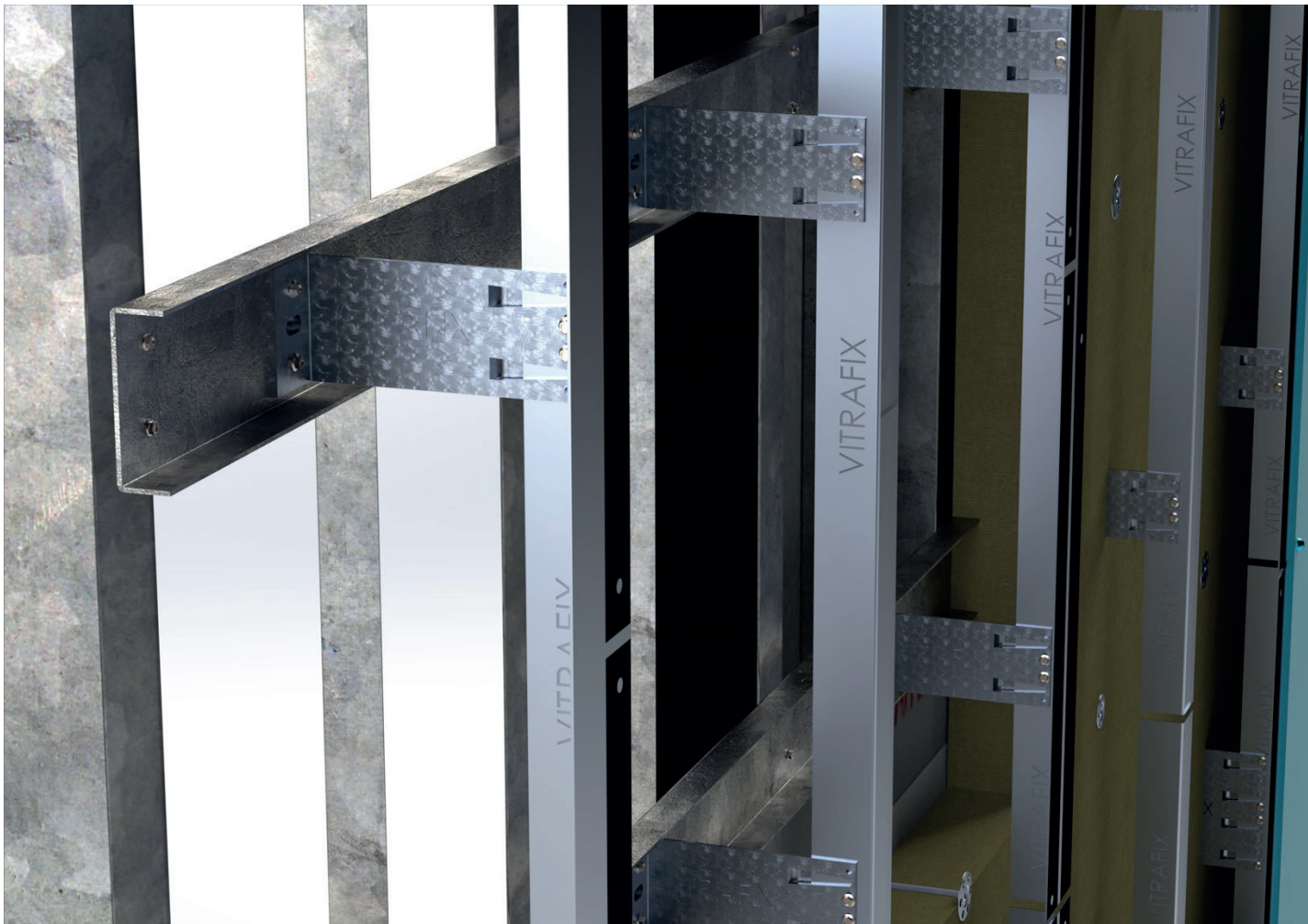
We have collaborated with industry-leading suppliers to deliver streamlined solutions for efficient and sustainable cladding projects. Our focus is on enhancing efficiency and expediting installation timelines, while also minimising the carbon footprint of each project in line with our sustainability goals.

With our unified approach, we provide a complete range of cladding components, from panels and subframe systems to insulation, masonry fixings, breather membranes, fire barriers, and specialist tools. Rest assured, our rigorously tested products and fully warranted system ensure a seamlessly coordinated, reliable, and centrally managed approach to delivering safe cladding solutions.

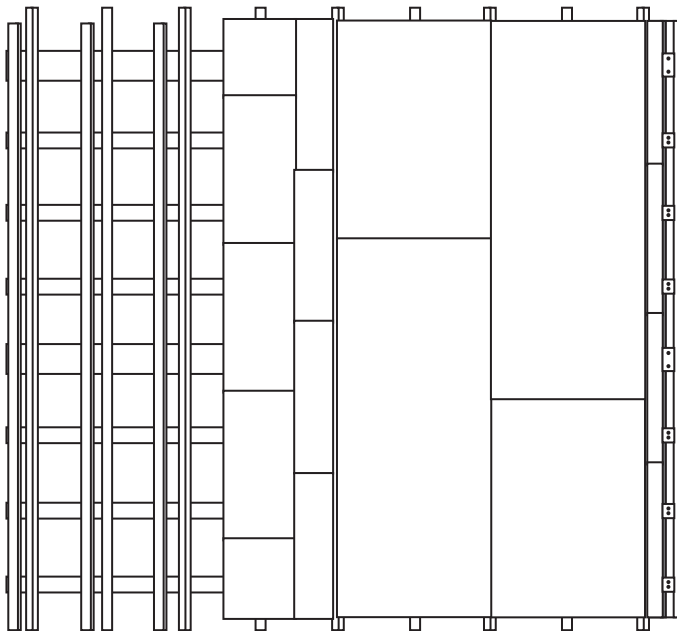
INTRODUCING OUR COMPLETE CLADDING SYSTEMS

Our complete cladding systems are designed to work with any project, offering a plethora of benefits:

- ▲ **Simplicity & Efficiency:**
Streamlined specification with NBS Chorus and centralised project management simplifies the process, saving you time, resources & money.
- ▲ **Robust Safety & Durability:**
Compliance with stringent safety standards. With high-grade components, Valcan products are tested from organisations such as the CWCT to ensure maximum safety and longevity.
- ▲ **Aesthetic Flexibility:**
Tailored solutions designed around your project's unique requirements, providing an architectural style that complements the intended design vision.
- ▲ **Sustainability & Energy Efficiency:**
Our systems reduce environmental impact and enhance energy efficiency.
- ▲ **Ease of Maintenance & Longevity:**
Durable and low-maintenance systems offer an appealing finish that lasts.
- ▲ **Warranty & Peace of Mind:**
A comprehensive full system warranty for up to 30-years, with all components sourced from trusted suppliers, assures long-term peace of mind.



SUITABLE FOR ANY CONSTRUCTION PROJECT.



Our cladding systems are suitable for any building type. Our products and systems are often chosen for medium to large scale projects where we work closely with clients and their architects, installers distributors and construction professionals.

Building types suitable for our complete cladding systems are as follows:

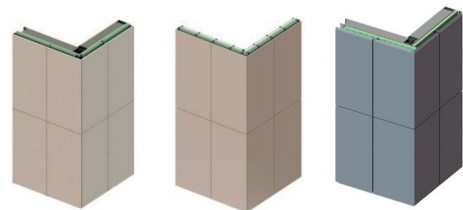
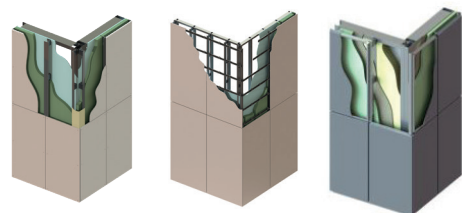
- ▲ Commercial Buildings
- ▲ Educational Institutions
- ▲ Healthcare Facilities
- ▲ Residential Buildings
- ▲ Industrial Buildings
- ▲ Public Buildings
- ▲ Hospitality Buildings
- ▲ Sports Facilities

FIXING ASSEMBLIES

There are a wide variety of fixing types you can choose from, including:

- ▲ Face-Fix
- ▲ Secret-Fix
- ▲ Secret-Fix Hook-On
- ▲ Interlocking Planks
- ▲ Cassette-Fix
- ▲ Discrete-Fix
- ▲ Standing Seam
- ▲ Stud-Weld

If you're looking for other options or a completely customised fixing assembly feel free to get in contact with us.



KEY COMPONENTS OF OUR COMPLETE CLADDING SYSTEMS



Valcan | ProcellaPro® A1 Sheathing Board (Page 14)

A1 Rated, non combustible made from fibre cement, provides a solid structural base, improves energy efficiency and sound dampening.



Valcan | VitraFix® Subframe System (Page 16)

Choose between non combustible options of aluminium or Magnelis steel with fixings included. This forms a strong, safe subframe system securing the cladding panels.

ESSENTIAL COMPONENTS

Breather Membrane

Maintains airtightness while allowing moisture escape.

Insulation

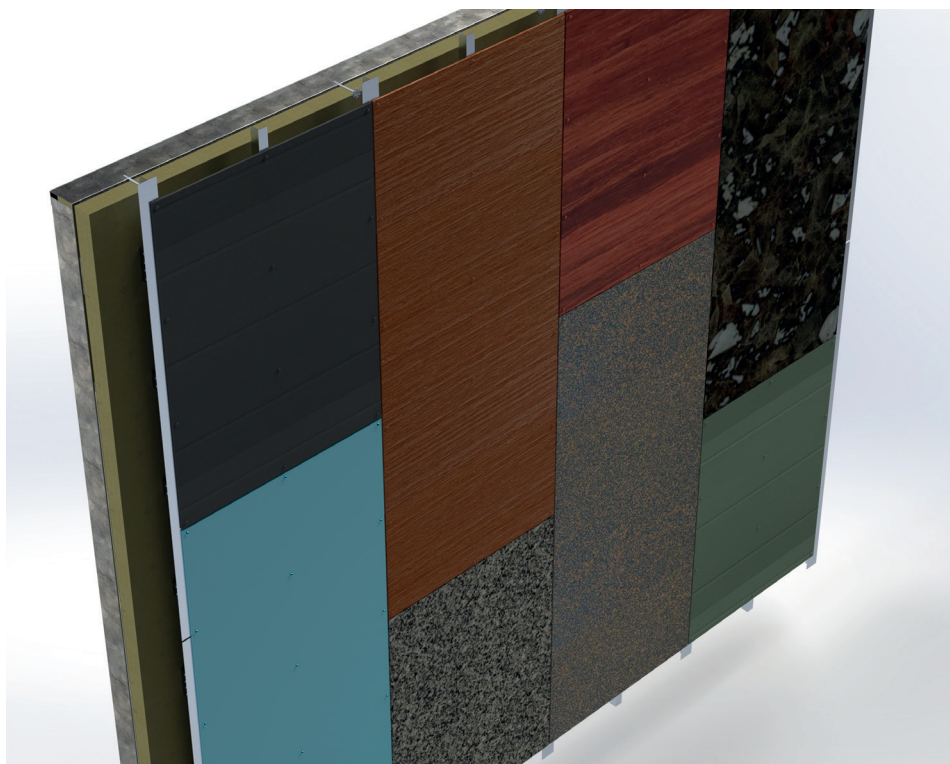
Enhances thermal performance and noise reduction.

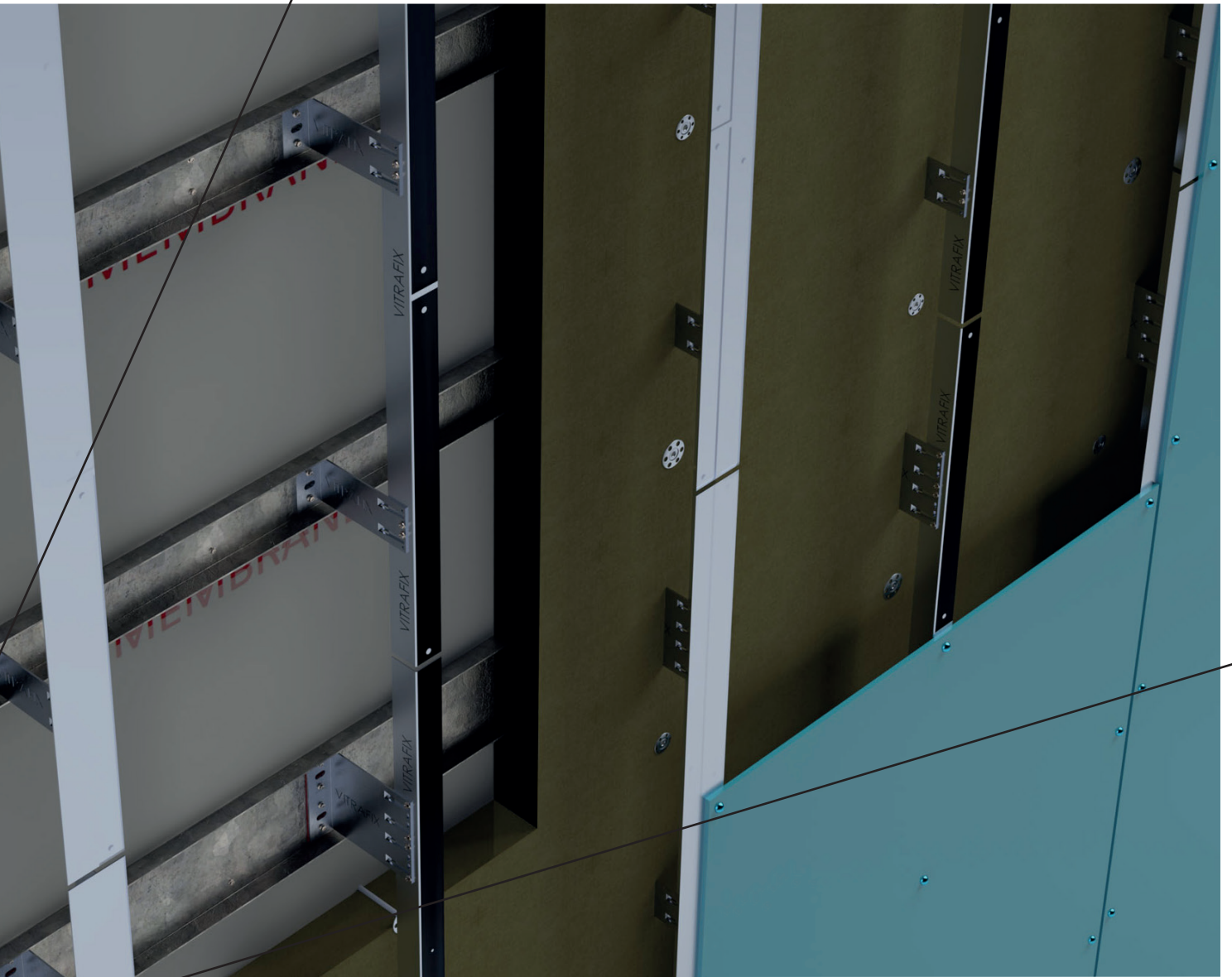
Fire Barriers

Assures fire safety compliance.

Fasteners, tooling & accessories

Ensures secure fastening with a professional finish including colour match options.





**CHOOSE FROM OUR FLAGSHIP CLADDING PANELS
TO PROVIDE THE DESIRED FINISH:**



**Valcan | VitraDual® A1
Aluminium (Page 19)**

Chosen for a modern aesthetic, our versatile facade panel can be tailored to both simple and complex designs. They're A1 rated, BBA approved and can be fabricated into any shape, or form to ensure any design vision.



**Valcan | Ceramapanel® A1
Fibre Cement (Page 20)**

For a touch of nature, these panels offer textured finishes including wood grain, smooth to touch or sandblasted surfaces. These panels are A1 rated and the most environmentally friendly and sustainable in our range.



4.5m
14'9"

PRODUCTS

We offer a variety of products that can make up a complete system for our customers. We can offer our products

MAIN PRODUCT RANGE:





procellapro[®]

Non-combustible Sheathing Board

ProcellaPro[®] is a high-performance building board or sheathing board that is A1 rated with a PCS value of 0.85MJ/kg.



PROCELLAPRO BENEFITS

- ▲ Non-combustible – A1 rated to BS EN 13501-1
- ▲ Panels pre-squared
- ▲ High stock holdings
- ▲ Long Lasting
- ▲ Cutting – Can be cut and shaped easily on-site
- ▲ Short lead times and fast installation time frames
- ▲ High Density - High Pull Out Rating / Structural Strength 1250 (+/- 50) kg/m³
- ▲ Sound dampening benefits
- ▲ Fast delivery
- ▲ Insulation fixings can be screwed into the panel
- ▲ NBS Chorus - easily add ProcellaPro into your specification
- ▲ Complete System - Can be purchased separately or as part of a complete non-combustible A1 rated cladding system



A1 rated to
BS EN 13501-01



Tested to BS8141
& BR135 compliant



Specify this product
online with NBS Chorus



Recyclable

COMPLIMENTARY SAMPLE

Simply send us an email or call to request a sample to be sent to you.



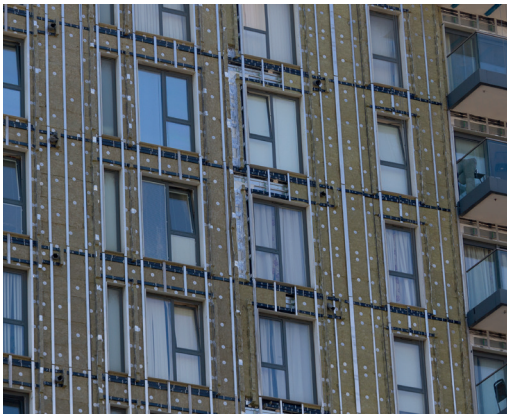
Pictured: Burrells Wharf, London. Featuring ProcellaPro® & VitraDual®



vitrafix[®]

Framing and Accessories

VitraFix[®] is a modular and high-quality subframe system which provides unparalleled safety and support for rainscreen cladding panels. Choose from high grade aluminium or Magelis steel.



VITRAFIX BENEFITS

- ▲ Non-combustible
- ▲ Lightweight – VitraFix[®] is incredibly rigid and lightweight and is also easy to install
- ▲ Versatile – VitraFix[®] has a standard range of brackets but can be offered in custom sizes to suit your specific requirements
- ▲ High durability – VitraFix[®] uses highly durable grades of aluminium for peace of mind and longevity
- ▲ Reduces Thermal Bridging
- ▲ Cost effective – VitraFix[®] is a cost-effective solution for façade installation
- ▲ Project specific calculations – The VitraFix[®] system comes with project specific details where and when required
- ▲ Coated profiles – When required, rails can be coated to 'black out' joints
- ▲ NBS Chorus – easily add VitraFix[®] into your specification
- ▲ Complete System – Can be purchased separately or as part of a complete non-combustible A1 rated cladding system



A1 rated to
BS EN 13501-01



Tested to BS8141
& BR135 compliant

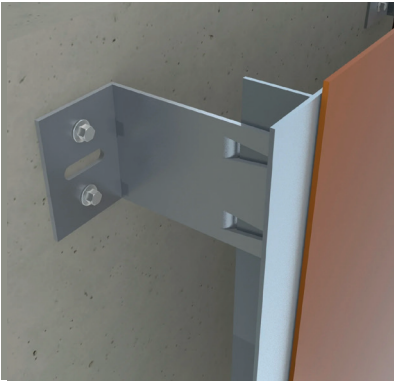


Specify this product
online with NBS Chorus



Recyclable

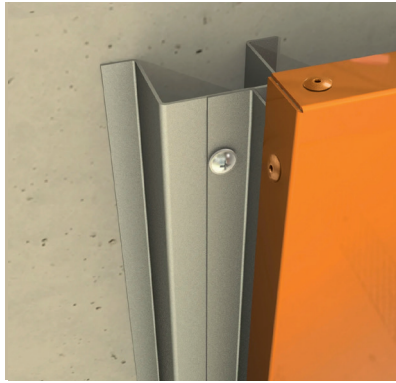
VITRAFIX® VF1



VF1 system uses helping brackets installed against the wall and then aluminium profiles.

VF1 system is used where insulation is required externally and panels are to be installed as face fixed or cassette panels.

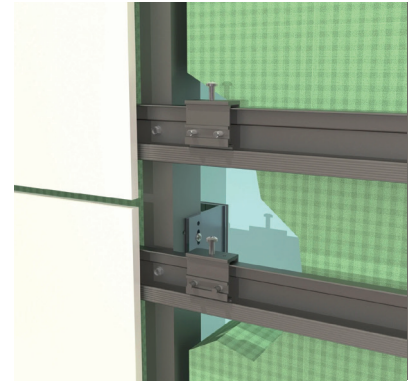
VITRAFIX® VF2



VF2 system comprises of top-hats and Z angles formed from aluminium or steel depending on project requirements.

VF2 is used where a facade has no requirement for external insulation with face fixed or cassette panels or when the helping hand brackets do not line up with SFS studs within the wall.

VITRAFIX® VF3



VF3 uses horizontal C channel rails and brackets attached to a VF1 or VF2 sub carrier frame and is suitable for fibre cement, stone or laminate type products.

VITRAFIX® VF4



VF4 system uses horizontal Channel rails and brackets and uses the VF1 or VF2 subframe systems similar to the VF3 system however the brackets are attached to aluminium panels either by stud welding or structurally bonding.

VITRAFIX® VFS



The VitraFix® Soffit System (VFS) offers a customizable solution for your soffit needs. The drop can be adjusted to meet your specific requirements and the system is composed of brackets made from either 5251/H22 or 6063/T6 grade aluminium.

VITRAFIX® VFM



VFM is a Magnelis steel carrier system designed for use as either a standard helping hand style system, or more commonly a floor spanning carrier system. It has a much higher melting point than a standard aluminium systems; 1425-1540 C vs 660 C



Pictured: Bailey Point, Bournemouth Uni. VitraDual® | Chromatic Jungle Green, Brushed Aluminium/Copper & Natural Havana



vitradual®

Non-Combustible Cassette Cladding

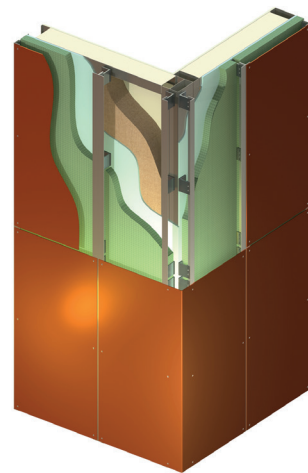
Discover the ultimate amalgamation of design and safety with our A1 rated, non-combustible solid aluminium rainscreen cladding. Imbued with a modern aesthetic, it's available in a vast selection of colours and finishes - from chromatic and stone to wood and beyond.

VITRADUAL BENEFITS

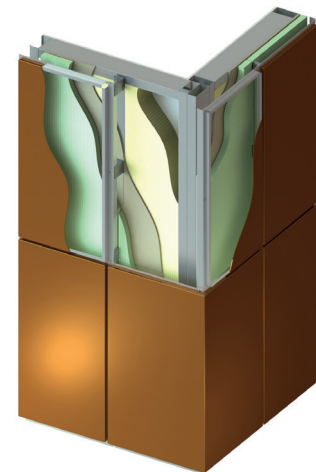
- ▲ Non-combustible – A1 rated to BS EN 13501-1
- ▲ Lightweight – VitraDual® is incredibly rigid and lightweight and is therefore also easy to install
- ▲ Versatile – VitraDual® can be custom designed into a wide range of shapes and dimensions as well as able to be perforated or curved in some applications making it a versatile design choice
- ▲ Maintenance – easy to maintain compared to polyester-based coatings
- ▲ High Durability – VitraDual® panels are highly durable and impact resistant. They can be used effectively in high traffic areas
- ▲ Paint System – VitraDual® only use the highly recognised PVDF KYNAR 500 or FEVE paints known for their high durability, providing the optimum resistance to weather and industrial pollutants
- ▲ Warranty – VitraDual® has up to a 30-year warranty
- ▲ Extremely Flat – Low Surface Stress
- ▲ NBS Chorus - easily add VitraDual® into your specification
- ▲ Complete System - Can be purchased separately or as part of a complete non-combustible A1 rated cladding system

POPULAR FIXING TYPES

Face-Fix Assembly



Cassette-Fix Assembly



More fixing systems are available, please speak to our sales team for more information.



Tested to BS8141 & BR135 compliant



Specify this product online with NBS Chorus



Recyclable



Environmental Product Declaration

EXPRESS RANGE

This range are held as standard stocked colours available for short delivery lead times and lower minimum order quantities.



9601
Silver
Metallic



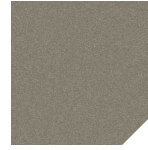
9205
Champagne
Metallic



9134
Smoke Silver



9137
Dark Grey
Metallic



9308
Bronze
Metallic



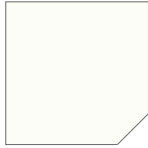
4150
Gold
Metallic



9809
Copper
Metallic



8400
Warm Oak



9902
White



9210
Frost White



9304
Cool Grey



9504
Crux Grey



1255
Riddle Grey



9130
Enigma
Black

NON EXPRESS RANGE

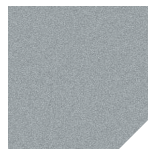
This range of colours consists of standard but non-stocked colours, lead times and minimum orders quantities may apply, contact us to discuss.



10008
Seal Grey



1510
Fresh Green



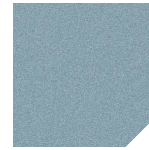
9701
Silver Ice
Metallic



4240
Sunshine
Grey



7085
Chromatic
Gold Dust



4420
Blue Grey
Metallic



7090
Chromatic
Ice



7450
Chromatic
Diamond
Purple



7550
Jungle
Green



7690
Chromatic
Anciet Red



Golden Ash



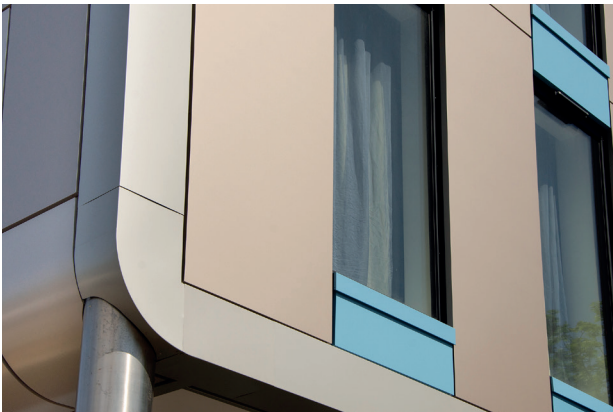
Soft Pine



Pacific Yew



Teak



NON EXPRESS RANGE - CONTINUED



8805
Dark
Kingwood



Dark Teak



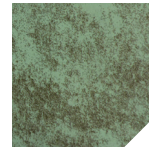
5362
Corten 3



5363
Corten 4



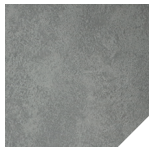
5571
Patina
Green 2



5570
Patina
Green



6003
Concrete 3



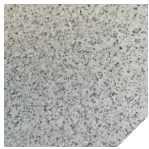
6002
Concrete 2



6001
Concrete 1



1005
Snow White



RAL
7026
Granite Grey



3221
Bleached
Mint



3032
Mint Green



6027
Light Green



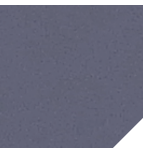
1599
Forest Green



1420
Reef Blue



10002
Lapis Blue



10001
Midnight
Blue



10007
Electric Blue



1125
Cool Yellow



1135
Sunshine
Yellow



1677
Poppy Red



1686
Power Red

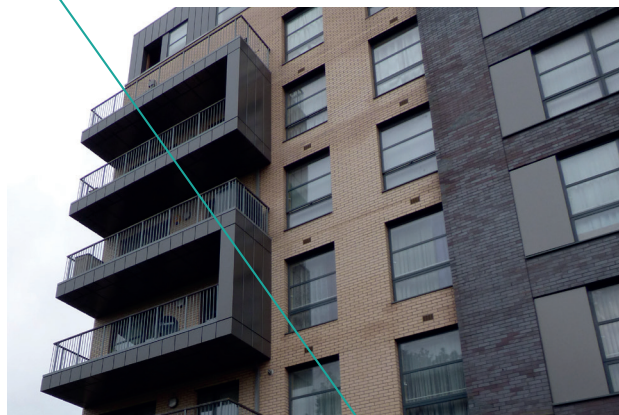
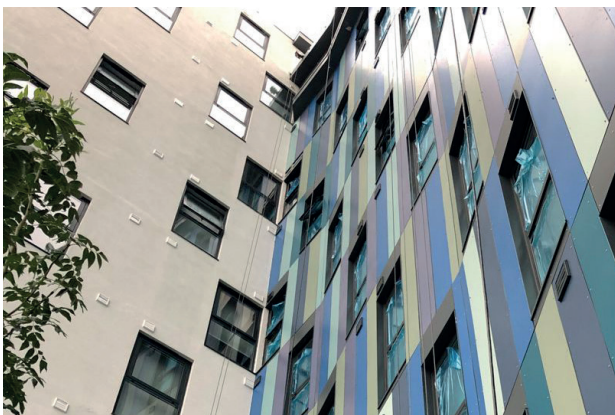


Any RAL
Colour

COMPLIMENTARY SAMPLES

Should you find a range of colours suitable for your project you can order up to three samples sent directly to you free of charge. Simply send us an email, call or request the samples online.

If you require to see a larger range of colours or finishes you'll need to setup an appointment with one of our facade experts. They'll be happy to meet you either on-site, or at your premises.





ceramapanel®

Compressed Fibre Cement Facade



Experience the perfect blend of aesthetics and safety with our A1 rated non-combustible fibre cement rainscreen cladding, featuring a natural look and an array of tactile finishes and through coloured panels.



CERMAPANEL® BENEFITS

- ▲ Non-combustible – A1 rated to BS EN 13501-1
- ▲ CWCT tested
- ▲ Available as a complete cement cladding system with carrier
- ▲ Cost effective
- ▲ Short lead times and fast installation time frames
- ▲ Panels supplied pre-squared
- ▲ Easily cut and installed on-site
- ▲ Maintenance – Long lasting, Low maintenance panels
- ▲ Finish – can be finished off-site for easy and efficient installation
- ▲ High durability – High strength and environmental durability
- ▲ Through coloured with wide colour range & finishing options
- ▲ Sound dampening benefits
- ▲ Graffiti resistant when coated with acrylic treatment (Natural+ range)
- ▲ NBS Chorus – Add Ceramapanel® into your specification
- ▲ Complete System – Can be purchased separately or as part of a complete non-combustible A1 rated cladding system



Tested to BS8141 & BR135 compliant

Specify this product online with NBS Chorus

Recyclable

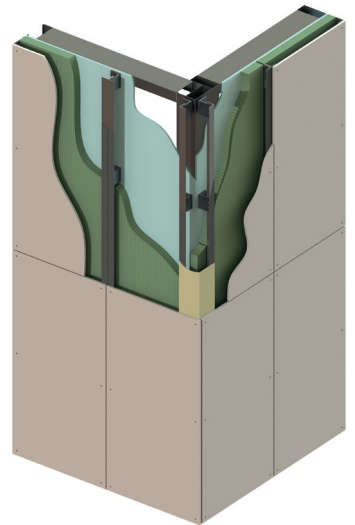
Environmental Product Declaration



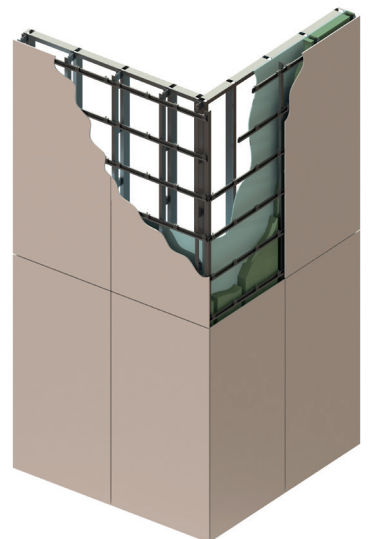
Pictured:
University of Exeter, East Park.
16,000m² Ceramapanel®
in Bleached Cotton.

POPULAR FIXING TYPES

Face-Fix Assembly



Cassette-Fix Assembly



More fixing systems are available, please speak to our sales team for more information.



NATURAL COLOURS

Ceramapanel Natural range of colours are through coloured panels that resemble natural/earth tones, these boards may contain white flecks which is a natural feature and add to the aesthetic of the panel.

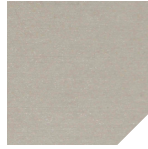
Natural range colours are available in the following colours:



1001
Bleached
Cotton



1011
Rain Cloud



1021
Light Slate



1031
Charcoal



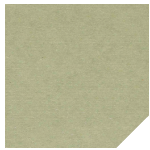
1041
Linen



1051
Sandcastle



1121
Sky Blue*



1061
Eucalyptus



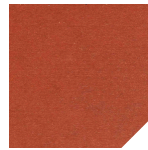
1071
Warm Tile



1081
Hearth Brick



1091
Cappuccino



1101
Burnt
Orange



1111
Vanilla



Any RAL
Colour

*High MOQ

NATURAL+ Colours

Ceramapanel Natural+: Includes an anti-graffiti coating which gives a slight shine and much richer tone of colour:



2001
Limestone



2011
Shadow
Rock



2021
Pebble



2031
Chalk Board



2041
Hessian



2051
Ripe Mango



2121
Glacier Blue



2061
Somerset
Apple



2071
Fired Clay



2081
Burnt
Orange



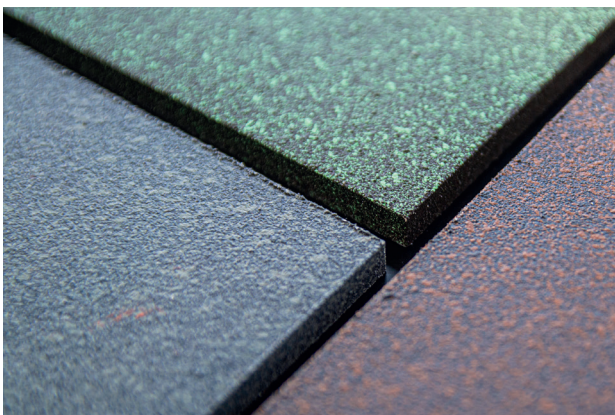
2091
Butterscotch



2101
Paprika



2111
Sawdust



FINISHES / TEXTURES

Ceramapanel textured range offers a very subtle but effective dimension to an already natural finish for that little extra uniqueness.



Sandblasted



Touch



Shot Sawn



Raw



Lines



Groove



Painted A1



Painted A2



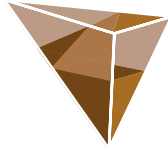
Printed

COMPLIMENTARY SAMPLES

Should you find a range of colours suitable for your project you can order up to three samples sent directly to you free of charge. Simply send us an email, call or request the samples online.

If you require to see a larger range of colours or finishes you'll need to setup an appointment with one of our facade experts. They'll be happy to meet you either on-site, or at your premises.

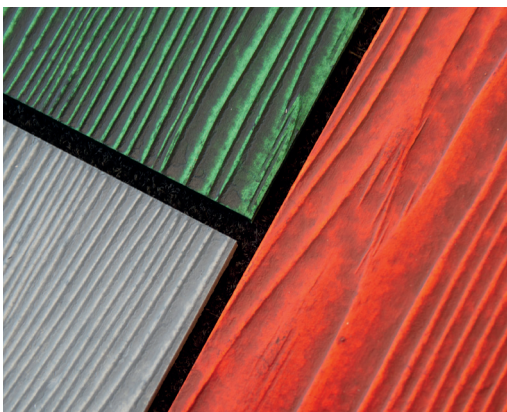
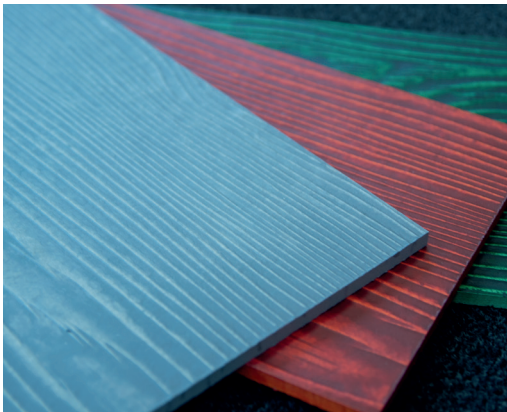




everlap®

Non-combustible Weatherboard

EverLap®: Embrace the charm of our non-combustible fibre cement weatherboard, brilliantly designed to mimic teak wood grain with a distinct raised grain finish. Styled as plank-style boards, they offer an authentic feel without compromising on safety or durability.



EVERLAP BENEFITS

- ▲ Non-combustible – A1 rated to BS EN 13501-1
- ▲ Cost effective
- ▲ Planks - Wood Effect (Texture - Raised Grain)
- ▲ Maintenance – Long lasting, Low maintenance panels
- ▲ Cutting – Can be cut and drilled easily on-site
- ▲ Highly resistant to pests and rot
- ▲ Long-life product
- ▲ Colours & finishes – Wide range including custom options
- ▲ Lightweight – Easy to transport
- ▲ Fabrication – Can be cut and shaped easily on-site
- ▲ Various size thickness options – 10 mm & 12 mm
- ▲ NBS Chorus – easily add Everlap® into your specification
- ▲ Complete System – Can be purchased separately or as part of a complete non-combustible A1 rated cladding system



A1 rated to
BS EN 13501-01



A2-s1,d0 rated to
BS EN 13501-01



Specify this product
online with NBS Chorus

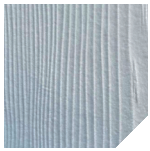


Recyclable

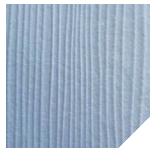
SOLID COLOURS

Everlap panel boards offer a wide range of solid colours to choose from, making it easy to find the perfect hue for your next project.

Solid range colours are available in the following finishes:



Telegrey



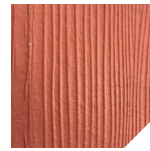
Blue Grey



Oyster White



Umbr Grey



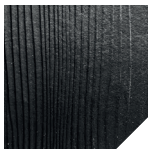
Copper
Brown



Any RAL
Colour



Pale Green



Traffic Black



Oxide Red



Light Grey



Silver Grey

WOOD STAINED COLOURS

Everlap is proud to offer a wide range of wood stained colours, offering a natural look and feel that will last for a very long time.

Wood stained colours are available in the following colours:



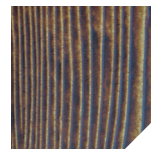
Cherrywood



Honeyoak



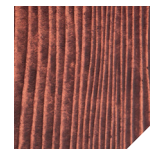
Deadwood



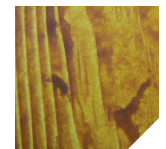
Walnut



Beech



Mahogany



Norwegian
Maple



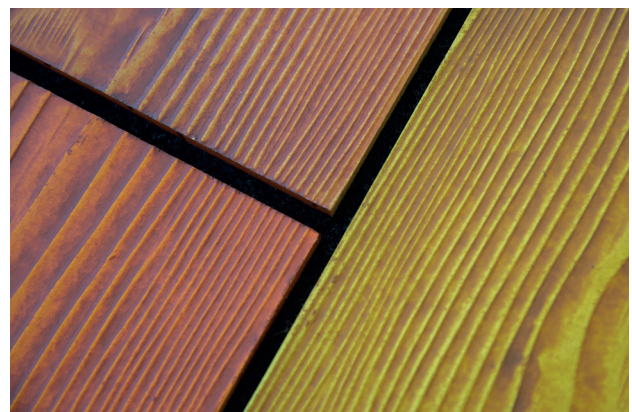
Norwegian
Spruce



Redwood

COMPLIMENTARY SAMPLES

Get in contact us with today and we'll get up to three samples sent to you free of charge.





Pictured: Denning Point, London | VitraDual®

CASE STUDIES

Valcan is proud to be the supplier of non combustibile rainscreen cladding for some of the best development projects happening in the UK and Europe. Our products are known for their reliability, and our customers can always count on our first-rate customer support and aftercare.

By choosing Valcan, you can be confident that you'll be using a product that meets the highest safety standards. And with our wide range of colours and styles, you can also create a uniquely stylish building that will stand out from the crowd. So if you're looking for a non combustibile rainscreen cladding solution that you can trust, look no further than Valcan.



CASE STUDY

EXETER UNIVERSITY, EAST PARK

PRODUCTS:	Ceramapanel® - A1 Fibre Cement Cladding
COLOURS:	1041 Linen / Texture: Raw
INSTALLATION:	Rivet Fix



Tested to BS8414
& BR135 compliant

The new build East Park Student Accommodation off Rennes Drive in Exeter offers in almost 1200 high quality student residencies across 11 tower blocks set into the rolling Devon hill side of one of the most scenic university campuses in the UK comprising of woodlands, lakes and botanical gardens.

With a sloping site with an difference of 35m, the requirement to deliver a non-combustible facade suited for a project ranging from 3 through to 8 stories which blends in to the natural surroundings, the architects, Stride Treglown in Bristol, chose to go with over 16,000m2 of Ceramapanel®.





CASE STUDY

GRAND PARK HOTEL, OSTERLEY

PRODUCTS:	VitraDual® - A1 Solid Aluminium Cladding
COLOURS:	9205 Champagne Metallic, 9308 Bronze Metallic, Blue RAL 5024
INSTALLATION:	Cassette fix

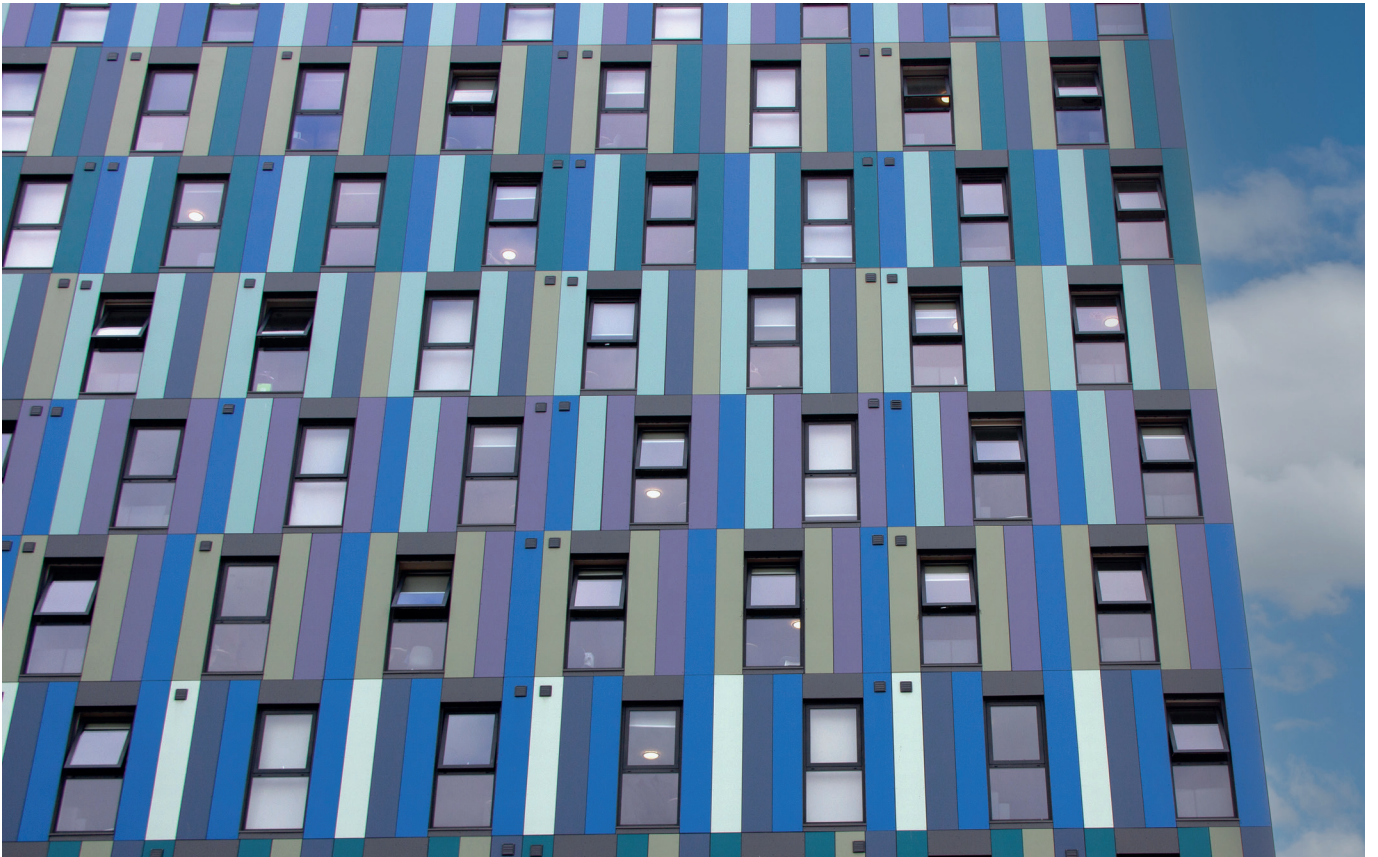


Tested to BS8414
& BR135 compliant

The Park Grand Hotel in Osterley was re-clad using VitraDual® to enhance the fire ratings of the external façade,

Valcan's standard colour range pantone custom colour were used to keep the aesthetics the same as the original building – colours chosen were 9205 Champagne Metallic and 9308 Bronze Metallic from the Metallics range, the custom colour was Blue RAL 5024.







CASE STUDY

IQ STUDENT ACCOMMODATION BRISTOL

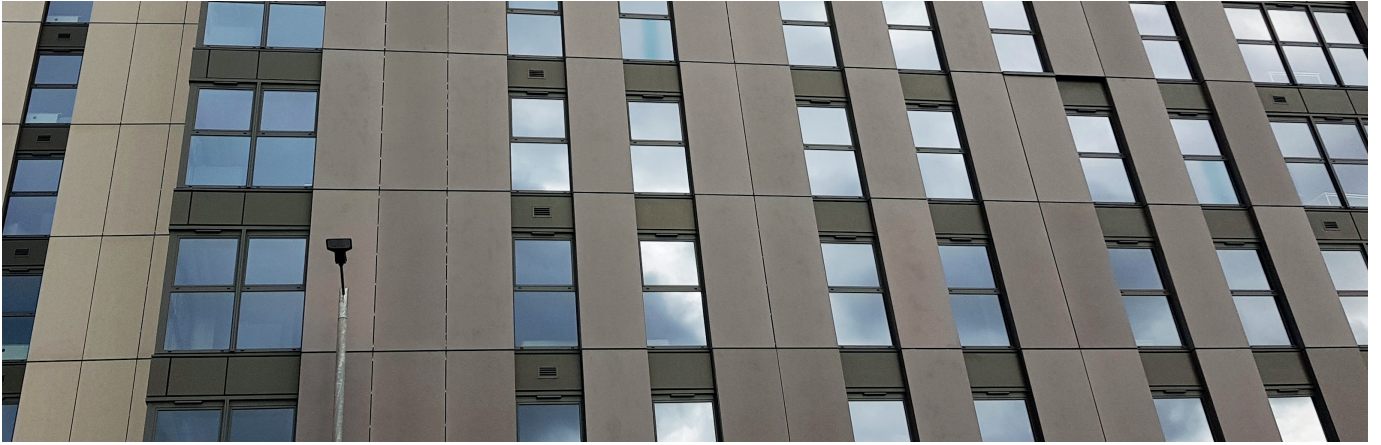
Products:	VitraDual® - A1 Solid Aluminium Cladding
Colours:	Midnight Blue, Ocean Depths, Bleached Mint, Lapis Blue, Mint Green, Stormy Sky, Green Slate and Electric Blue



Tested to BS8414
& BR135 compliant

In a world where many buildings are made of concrete or brick, it's refreshing to see something different. The IQ student accommodation building uses sleek and eye-catching VitraDual® panels where approximately 1000m² was used.

The 11-storey building's façade comes in an array of colours. There are 361 bedrooms in total, making iQ Bristol the perfect place for students to live and socialise together.



CASE STUDY LITTLE PATRICK STREET

PRODUCTS:	Ceramapanel® - A1 Fibre Cement Cladding
COLOURS:	2021 Pebble, 1041 Linen
INSTALLATION:	Secret fix



RATED



A1-S1.D0 RATED

The new build student accommodation block on Little Patrick Street in Belfast was a £30m development consisting of 430 beds over 11 floors and completed by Graham Construction during July 2020.

To create the natural aesthetics the architect, Fletcher Joseph chose to use Ceramapanel® in Natural Textures Raw 1041 Linen and Natural+ Textures Raw 2021 Pebble – the panels were secret fixed using the 12mm thick panels.





CASE STUDY

VYNERS SCHOOL

PRODUCTS:	Ceramapanel® - A1 Fibre Cement Cladding
COLOURS:	2071 Fired Clay, 2081 Burnt Orange, 2101 Paprika
FINISH:	Natural+ Textures Raw
INSTALLATION:	Secret fix



Tested to BS8414
 & BR135 compliant

Vyners School in the London Borough of Hillingdon was a new build project designed by Novium Architects and constructed by Farrans.

A bright, vibrant and durable façade was required so the project used 1000m² of Ceramapanel® installed as secret fixed panels. For added protection, the colours were selected from the Natural+ range.







CASE STUDY

FULBOURNE ROAD, WALTHAMSTOW, LONDON

PRODUCTS:	VitraDual® - A1 Solid Aluminium Cladding
COLOURS:	9702 Bold Cream
INSTALLATION:	Face Fix



Tested to BS8414 & BR135 compliant

The residential development on Fulbourne Road in Walthamstow was a residential-led mixed-use development comprising of 125 dwellings and 5 commercial units split across 5 blocks on the 1 ha site of the former Ensign Camera factory. The residential accommodation consists of 16 town houses and 109 flats including 11 units offering wheelchair access.

The architects appointed on the project created the defining characteristics using the brick bonding pattern and aluminium cladding system, however in the project underwent remediation work to bring the external facade up to current building regulations, the original panel was replaced with VitraDual® to offer an A1 rated, non-combustible solution.



CASE STUDY

ADDINGTON VALLEY ACADEMY, CROYDON

PRODUCTS:	VitraFix and A1 Ceramapanel®
COLOURS:	Ceramapanel Natural Textures Raw 1031 Charcoal, 1091 Cappuccino, 1081 Hearth Brick
INSTALLATION	Face Fix



This 2,000+ m2 project was a new build for a Special Free School in Croydon for children and young people with autism and learning difficulties.

Addington Valley Academy is a co-educational Special School with 150 places for children and young people aged 2-19 who have autism and social communication, cognitive, sensory and social, emotional, and behavioural needs in the Croydon region.

Valcan's A1 non-combustible cladding systems were reviewed and after working closely with the architects on the project, Ceramapanel® was specified installed back using our VitraFix® VF1 carrier system and colour matched fixing solutions.



SUSTAINABILITY AT VALCAN: LEADING THE CHARGE FOR A GREENER FUTURE

We are committed to operating our business in an environmentally responsible manner. As a manufacturer and distributors of goods, we recognise the importance of reducing our carbon footprint and being conscious of our impact on the planet. Our mission is to drive a culture change within our industry, inspiring others to adopt more sustainable practices.

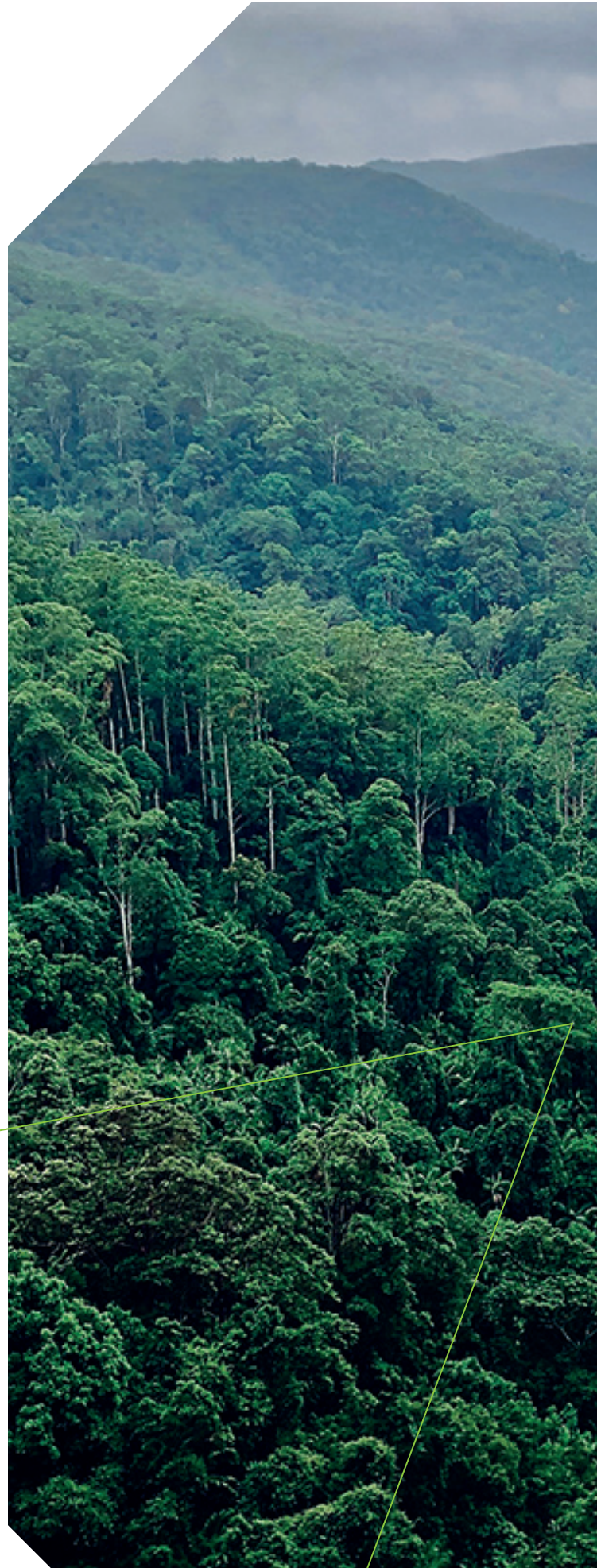
OUR VISION FOR A GREENER FUTURE:

At Valcan, our goal is to become a greener and more sustainable company by constantly evaluating and improving our operations. We aim to lead the charge in our industry by:

Continually researching and implementing innovative, eco-friendly manufacturing processes. Promoting responsible sourcing of raw materials and engaging with suppliers who share our commitment to sustainability.

Encouraging our employees to adopt sustainable practices, both at work and in their daily lives. Collaborating with industry partners to advocate for better environmental policies and standards.

By taking these steps, we hope to create a positive impact on the environment and inspire others within our industry to follow suit. Together, we can build a more sustainable future for generations to come.





PARTNERSHIP WITH ECOLOGI:

Valcan has joined forces with Ecologi, a forward-thinking organisation that plants trees and supports community projects worldwide. Through this partnership, we are offsetting our carbon emissions, contributing to reforestation efforts, and investing in global sustainability projects.

RECYCLING PROGRAM FOR ALUMINIUM PANELS:

We believe in the power of recycling and have implemented a recycling program for our VitraDual® aluminium panels. Customers can return old or damaged panels to us, and we will recycle the materials, ensuring that resources are utilised efficiently where waste is minimised.

RE-PURPOSING ALUMINIUM PANELS INTO VITRAFIX® COMPONENTS:

In our pursuit of sustainability, we have developed an innovative process to re-purpose aluminium panels into parts for our VitraFix® range. By giving new life to these materials, we reduce waste and promote a circular economy.

BUILDING A SUSTAINABLE FUTURE WITH OUR COMPLETE CLADDING SYSTEMS

By offering a comprehensive range of cladding components, we streamline the supply process, reducing deliveries and administrative tasks. This efficient approach significantly lowers our carbon footprint and supports our commitment to a greener future. With all essential elements included in our system, we minimize waste and promote resource efficiency.

We invite you to join us on our journey toward a more sustainable future. As a valued partner, customer, or stakeholder, your support is crucial to our mission. Let's work together to create a greener world and lead the way for a more responsible and sustainable industry.

CONTINUING PROFESSIONAL DEVELOPMENT (CPD)



The CPD Standards Office
CPD PROVIDER: 21338
2022-2024
www.cpdstandards.com

Join our free cladding CPD presentations online via or face to face at your premises.

Our popular CPD focuses on fire safety for buildings over 11m high. Lasts for 1 hour including a round of questions and answers at the end.

This provides a fantastic learning opportunity for architects, installers and construction professionals in the UK.

Topics explained are:

- ▲ Introduction To Valcan
- ▲ Rainscreen Cladding Overview - How It Works
- ▲ Fire Regulations - ADB Vol 2 Amendments
- ▲ How These Amendments Affect Your Project
- ▲ How To Comply Following The Ban On Combustible Cladding
- ▲ EN13501-01 Classification Explained
- ▲ The Difference Between A1 / A2 classifications
- ▲ The Golden Thread
- ▲ The Building Safety Act 2022
- ▲ Testing Options
- ▲ Valcan Solutions - Fibre Cement, ACM & Aluminium etc.
- ▲ Case Studies
- ▲ Questions & Answers Session

Book your place

Get in touch with us today and we'll arrange the best date/time:

Call: 01278 428245
Email: enquiries@valcan.co.uk
Website: www.valcan.co.uk/cpd



Pictured: Streamlight, London | VitraDual®

ON-SITE TOOLBOX TALKS

In our pursuit of fostering a cultural change in the industry, we stand at the forefront as advocates for implementing Dame Judith Hackitt's Golden Thread Principles. Our aim is to empower clients who choose Valcan products to embrace these principles effectively.

To ensure that our standards remain uncompromised, we kindly request all prospective recognised installers to take part in a Toolbox Talk and provide tangible proof of operating a professionally managed business. This encompasses aspects such as accurate pricing, efficient project completion, and the ability to offer a comprehensive package to clients.

Support and guidance will be provided on:

- VitraFix®, VitraDual® & Ceramapanel®
- Fabrication Techniques
- Installation Methods
- General Housekeeping
- Questions & Answers



To arrange a Toolbox Talk get in touch with us by speaking to your contact directly, alternatively, call us on 01278 428 245 or email us at enquiries@valcan.co.uk and we'll get you registered for a session.





VALCAN

The Defining Standard



Certificate number: 16388
ISO 9001
ISO 14001

T: 01278 428 245
E: enquiries@valcan.co.uk
W: www.valcan.co.uk

Dunball House,
Woodlands Court Business Park,
Bristol Rd,
Bridgwater, Somerset
TA6 4FJ