



**V A L C A N**

The Defining Standard

# RAINSCREEN CLADDING SUBFRAME SYSTEMS

**Valcan VitraFix®**

**bsi.identify**



Registered manufacturer 2023/24



**vitrafix®**

Cladding Subframe System





## OUR VISION

To lead the industry as an innovative and proactive organisation, consistently delivering non-combustible façade solutions, renowned for excellence of product, product support and superior customer service – the defining standard.



## OUR MISSION

To be the market leader in non-combustible façades for high-rise buildings, through design and supply of A1 and A2 rated rainscreen cladding systems, that are easy to buy and fast to install.



## OUR VALUES

Our commitment to respect, loyalty, honesty, innovation, responsiveness, and teamwork means that we deliver exceptional products/services that exceed customer expectations, build strong and lasting relationships with our customers and partners, and continuously strive to improve and innovate to better serve our customers' evolving needs.

### CONTENTS

What is VitraFix®? / Benefits of VitraFix®	<a href="#">4</a>
Complete Systems	<a href="#">5-6</a>
Testing & Specifications	<a href="#">7</a>
VitraFix® VF1	<a href="#">8-9</a>
VitraFix® VF2	<a href="#">9-10</a>
VitraFix® VF3	<a href="#">11</a>
VitraFix® VFS Soffit System	<a href="#">12</a>
Facade Fixing Systems	<a href="#">13</a>
Installation Accessories	<a href="#">14</a>
VitraFix® Brackets, Rails / Fixings & Components List	<a href="#">16-17</a>
Training for Installers & Requesting Installers	<a href="#">18</a>
Technical Support / Storage & Handling	<a href="#">19</a>
Sustainability	<a href="#">20-21</a>
Installation Support	<a href="#">22</a>
Typical Drawing Examples	<a href="#">25</a>
VitraFix® Projects	<a href="#">26-27</a>

All information (including any drawings, designs or specified materials) set out in this document is provided for guidance only. We do not accept any liability for it and do not warrant or take responsibility for its accuracy.

The document does not take into account the requirements of your project and should not be relied upon. All information contained in it should be verified and approved by a qualified professional to ensure it meets your requirements and the requirements of your project.

The information and prices contained here are believed to be correct at time of publishing. Valcan reserves the right to revise the contents of this document at any time.



# WHAT IS VITRAFIX®

Valcan VitraFix® is a high-quality, modular subframe system, designed to offer reliable safety and robust support for rainscreen cladding panels. Capable of accommodating a broad range of panel materials, including A1 and A2 rated non-combustible options, VitraFix® stands as a durable and reliable choice for your construction project.

With its adaptability, VitraFix® supports various panel assemblies, including face-fix, cassette panels, secret fix and many other fabricated designs.

Tailor your solution to meet the specific needs of your project for a unique and stress-free cladding installation experience.

## BENEFITS OF VITRAFIX®

- ▲ **Non-combustible:** Compliant with the stringent regulations of the European Directive
- ▲ **Tested** - CWCT & BS8414
- ▲ **Lightweight:** A rigid yet lightweight construction ensures easy installation
- ▲ **Versatile:** A standard assortment of brackets is available, with custom sizes offered to meet your distinct requirements
- ▲ **Flexible:** Designed to accommodate a multitude of building designs and configurations
- ▲ **High durability:** Crafted with the most resilient grades of aluminium, Magnelis steel, or stainless steel for added peace of mind and product longevity
- ▲ **Cost-effective:** A budget-friendly solution that expedites façade installation
- ▲ **Project specific calculations:** Tailored details are provided for every project
- ▲ **Coated profiles:** Option to have rails coated for concealing joints
- ▲ **Low maintenance:** Aluminium's inherent characteristics eliminate the need for regular painting or sealing, rendering it a low maintenance option
- ▲ **Extended Warranty:** Coverage for up to 30 years
- ▲ **Complete system options:** Choose from an array of complete cladding systems incorporating VitraFix® as the subframe system for complete assurance and a full system warranty

# PART OF A COMPLETE CLADDING SYSTEM

In response to evolving industry demands, we have partnered with Certifix, one of the UK's fastest-growing providers of cladding products. This strategic alliance allows us to deliver a comprehensive and integrated solution for any building envelope. Our complete system encompasses all essential elements, catering to the diverse needs of professionals in the construction sector.

VitraFix® plays a crucial element of this the complete cladding system. Let's delve deeper into how VitraFix® supports the system as a whole.

## SYSTEM COMPATIBILITY

One of the key strengths of VitraFix® is its compatibility with a wide range of panel systems, whether it be Ceramapanel®, VitraDual®, or other A1 and A2 rated non-combustible panel options. This versatility makes VitraFix® an ideal choice for diverse architectural designs and construction projects.

## INTEGRATED SOLUTION

As part of a complete system, VitraFix® works in harmony with the cladding panels, insulation layers, and the building's structure itself. Its modular design allows for smooth assembly and installation, ensuring panels are securely and accurately affixed. Furthermore, VitraFix® enables effective drainage and ventilation behind the panels, contributing to the overall weather resistance and longevity of the facade.





### CUSTOMISABILITY AND AESTHETICS

Whether you're aiming for a smooth, flat surface or a dynamic, textured facade, VitraFix® accommodates a broad range of design ambitions. Plus, the option to colour coat rails allows for the seamless blending of joints into the façade's overall design, enhancing the finished look.

### ENERGY EFFICIENCY

VitraFix® assists in improving the thermal performance of the building envelope. When combined with proper insulation and high-performance cladding panels, it can significantly contribute to energy efficiency, potentially allowing for reduced insulation depths while maintaining or improving the building's overall U-value.

### SAFETY AND COMPLIANCE

When integrated into a complete system, VitraFix® maintains its non-combustible status under the European Directive. It also meets the stringent safety requirements, including compliance with BS8414 tests and CWCT standards, contributing to the overall safety and fire resistance of the whole cladding system.



## LONGEVITY AND WARRANTY

A part of a full cladding system from Valcan, VitraFix® benefits from a full system warranty, offering peace of mind and a guarantee of performance for years to come. The durable materials used in VitraFix® ensures its longevity, reducing the need for maintenance and replacement over time.

In summary, VitraFix® not only provides a robust and versatile subframe system but also forms a key component of a holistic facade solution that delivers on aesthetics, performance, safety, and sustainability.

## ALL IN ONE CLADDING SYSTEMS FROM VALCAN

For more information about our complete cladding solutions/systems call us on 01278 428245 or email us on [enquiries@valcan.co.uk](mailto:enquiries@valcan.co.uk).

# TESTING AND SPECIFICATIONS



## CWCT TESTING

VitraFix® subframe system has been tested by the Centre for Window and Cladding Technology (CWCT) which focuses on wind, rain and impact damage.



Tested to BS8414  
& BR135 compliant

## FIRE CLASSIFICATION

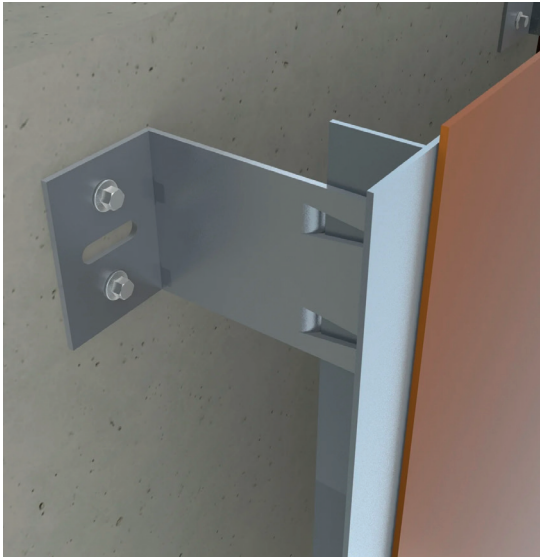
VitraFix® is deemed as non-combustible under the European Directive and has also tested within Valcan's BS8414 tests with VitraDual® A1 and Vitrabond® /A2 – all tests are compliant to BR135 requirements.



**NBS National  
BIM Library**

## SPECIFY WITH NBS

Easily integrate Vitrafix® into your project specifications with our BIM models. Access the models on the NBS National BIM Library or directly on our website. With seamless access to product information, specifying Vitrafix® for your cladding project has never been easier.



# VITRAFIX® VF1 BRACKET & RAIL SYSTEM

The VF1 system is designed to provide the perfect solution for your cladding project. With helping hand L brackets installed against the wall and aluminium L/T profiles, you'll enjoy precision and stability in every installation. The bracket has an impressive adjustment range of 35mm, with a range of 55-386mm from the smallest to largest bracket.

Take on even larger cavities with ease by combining the VF1 system with the VF2 top hats. The VF1 system is the ideal choice for projects requiring external insulation and face fixed or cassette panel installations.

## KEY FEATURES

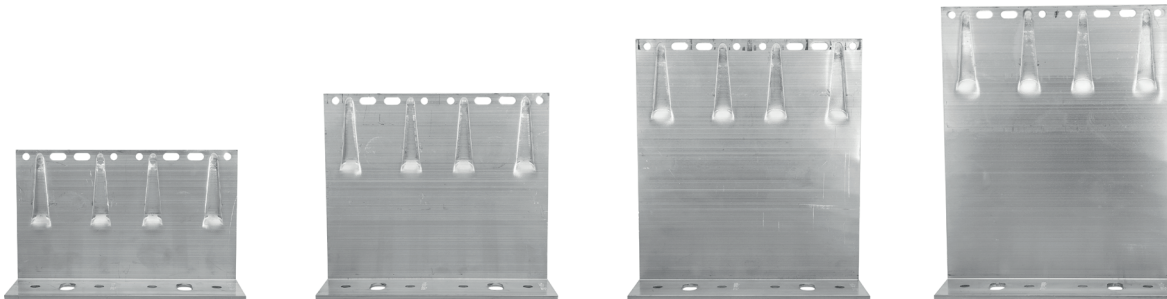
**VF1 Brackets:** Choose from 100mm, 140mm, 180mm and 200mm options, with an adjustment range of 100-236mm. If you need something specific to your project, custom brackets are available from 50-350mm.

**VF1 Rails:** The VF1 rails provide versatility and durability, with options of 100x50mm T rails and 50x50mm L rails. And for a sleek look, the rails can be coated to black out joints as required. With lengths of 3m or 6m, you'll have everything you need to complete your cladding project with ease. Custom brackets are available upon request.

## BRACKETS

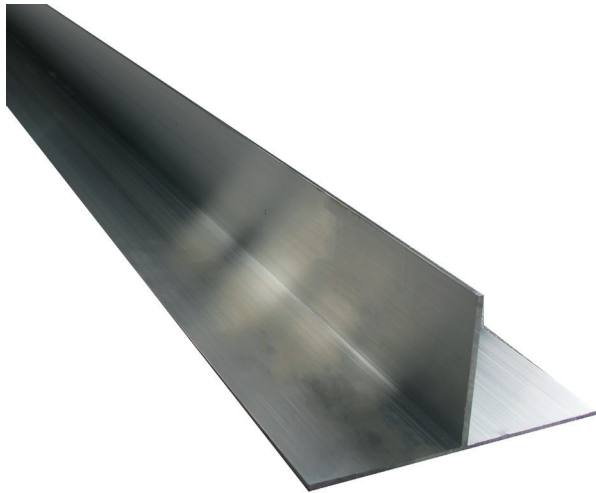
Choose from 4 main sizes, each offering 35mm of adjustment and an optional 3mm thick standard isolation pads or A2 non-combustible alternatives for added security. Made from 6063/T6 grade aluminium or magnelis/stainless steel - the extruded brackets provide both structural strength and performance.

And for those looking for a more customised solution, we offer a range of folded brackets with a depth of 50mm to 350mm. These brackets still provide the same 35mm adjustment and are made from 5251/H22 aluminium. Pricing for custom folded brackets is available upon request.



VF1 BRACKET	ADJUSTMENT
100mm Single Extruded	102 - 135 mm
100mm Double Extruded	
140mm Single Extruded	142 - 175 mm
140mm Double Extruded	
180mm Single Extruded	182 - 215 mm
180mm Double Extruded	
200mm Single Extruded	202 - 235 mm
200mm Double Extruded	
Folded 5251 Brackets from 50-350mm, single and doubles	52 - 385mm





## RAILS

And to make installation even easier, our T and L profile rails come in standard 6m and 3m lengths, ready for fast delivery throughout the UK. They are constructed with 6063/T6 grade aluminium for durability and can be customised with anodized or powder-coated finishes upon request. Custom lengths are also available, contact us for more information on pricing and lead times.

RAIL SIZE	LENGTH
100 x 50mm T	6m Length
100 x 50mm T	3m Length
50 x 50mm L	6m Length
50 x 50mm L	3m Length

**i** Custom lengths available - [contact us](#) for more information.

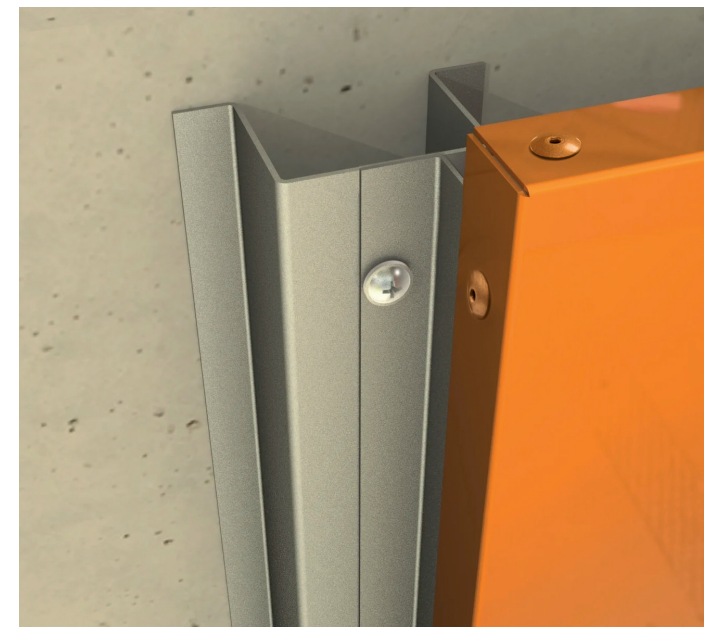
## VITRAFIX® VF2

VitraFix® VF2 offers a range of top hats and U-rails designed to support your cladding panels over SFS studs. VF2 provides not just versatility but peace of mind as well, offering a non-combustible solution where timber battens have been used. Upgrade your cladding project with the combination of VF1 and VF2 systems.

## KEY FEATURES

The top hats come in standard depths of 15mm to 50mm and U channels in two widths to fit single and double brackets.

Each piece is available in lengths of 3m, with custom sizing options also available. Choose between the durability of 5251/H22 aluminium or the strength of galvanized steel for the ultimate peace of mind.



# VITRAFIX® VF2 PROFILES

The range of VF2 offers top-hat and U-channel profiles designed for installation with VF1 brackets on light-weight steel frame wall build-ups, isolated from the stud location. As a non-combustible alternative, the top-hat profiles can also be used on projects that would have used combustible timber battens.

VF2 profiles are available in 5000 series aluminium or galvanised steel, with standard top-hat sizes ranging from 15mm to 50mm in depth and U-channel options in two widths to suit single and double brackets. All VF2 components come in 3m lengths as standard, but can be custom manufactured to any size.

For more detailed information on VF2 profile sizes and descriptions, see the table to the right.

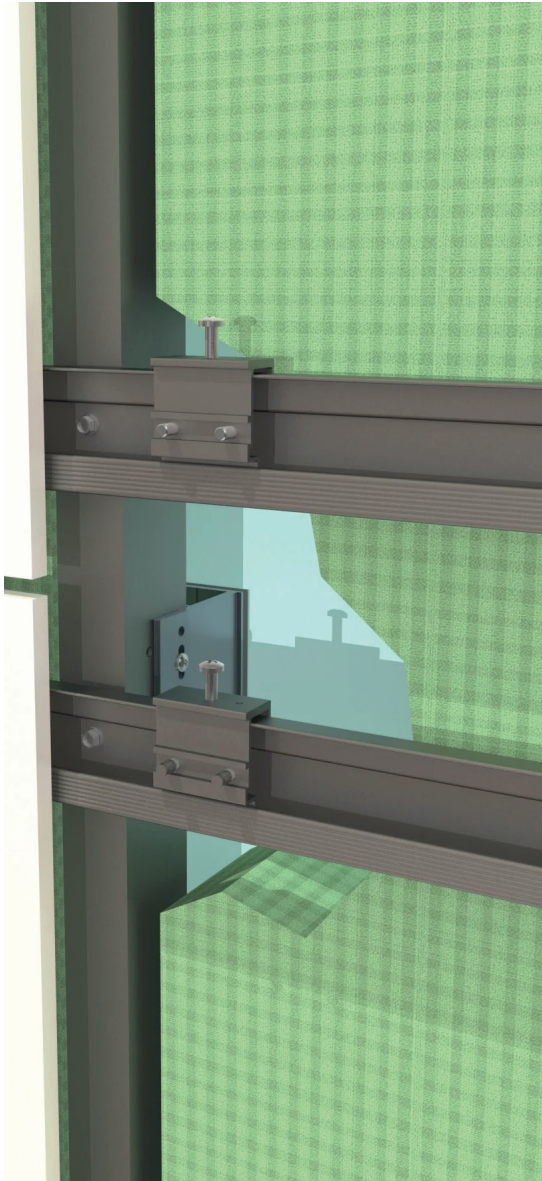
VF2 PROFILE DESCRIPTION	APPLICATION
174 x 15 x 2mm Aluminium U-Channel, 3m Length	Spans the lightweight steel frame studs.
90 x 15 x 2mm Aluminium U-Channel, 3m Length	
174 x 15 x 2mm Galv Steel U-Channel, 3m Length	
90 x 15 x 2mm Galv Steel U-Channel, 3m Length	
164 x 15 x 2mm Aluminium Top-Hat, 3m Length	Spans the lightweight steel frame studs and adds 15mm depth to achievable cavity.
84 x 15 x 2mm Aluminium Top-Hat, 3m Length	
100 x 50 x 2mm Aluminium Top-Hat, 3m Length	Replaces timber battens for non-combustible alternative.
50 x 50 x 2mm Aluminium Top-Hat, 3m Length	



Please note:

Other materials and sizes of VF2 profile can be manufactured on request, please contact the Valcan team with your enquiry.

# VITRAFIX® VF3 SECRET FIX SYSTEM



Perfect for installing fibre cement, stone, or laminate type products, the VF3 system utilises horizontal C channel rails and brackets attached to a VF1 (or VF2) sub frame system.

Effortlessly secure your panels with the precision of the C brackets, which are attached to the rear of the panel using undercut anchors, then fixed into place on the C channel rail. This system adds an extra 30mm of depth on top of the already reliable VF1 or VF2 system.

VF3's secret fixed installation method makes it the ideal solution for projects using fibre cement panels such as Ceramapanel®. The brackets are attached to the back of the panels using undercut secret fix anchors and then hooked onto a horizontal rail for a secure hold.

For more information and pricing on the VF3 System, contact the Valcan team with your project details.

## KEY FEATURES

The VF3 system is used for secret-fixed installation methods of fibre cement panels, such as Ceramapanel®. The C-channel rails are available in lengths of 3m or 6m and brackets are available for a range of undercut fixings. The rails can be coloured to black out joints as required.

VF3 DESCRIPTION	APPLICATION
VF3 Horizontal Rail, 3m	Installed to vertical rails to receive brackets on panel. Secured to vertical rail using 4.8 x 25mm self drill fixing.
VF3 Fixed Bracket	Top row of secret fixed brackets secured to back of panel - these are then secured to the horizontal rail.
VF3 Floating Bracket	Middle and lower row of brackets secured to back of panel - these are free floating.



## VITRAFIX® VFS SOFFIT SYSTEM

The VitraFix® Soffit System (VFS) offers a customisable solution for your design or installation project. The drop can be adjusted to meet your specific requirements and the system is composed of brackets made from 5251/H22 grade aluminium.

Contact the Valcan team for more information and pricing on this versatile solution., please get in touch with our team on 01278 428245.

# VITRAFIX® FIXINGS

In addition to our VitraFix® system components, we also provide tested and trusted fixings to ensure proper installation. Our self-drilling fixings are made of either A2 or A4 stainless steel, depending on the project location and requirements. The fixings used for attaching the panels to the carrier rails can be colour-matched to our Ceramapanel® and VitraDual® panels and others for a seamless look.

The VitraFix® Rivets offered come in either A4 stainless steel or A2 stainless steel/aluminium options, depending on the project requirements. The rivets are multi-grip, providing a grip range of 5-21mm.



FIXING DESCRIPTION	APPLICATION
4.8 x 25mm Self Drilling Screw, A2 Grade Stainless	Bracket to rail.
4.8 x 25mm Self Drilling Screw, A4 Grade Stainless	
5.5 x 38mm Self Drilling Screw with Bonded Washer, A2 Grade Stainless	Bracket and/or VF2 rail to Lightweight Steel Stud and to VF2 horizontal rail.
5.5 x 38mm Self Drilling Screw with Bonded Washer, A4 Grade Stainless	
4.8 x 17mm Multi-Grip Rivet with 16mm head, A2/aluminium grade, colour matched to Valcan panels (5 - 13mm grip range)	Installation of panels to carrier system.
4.8 x 20mm Multi-Grip Rivet with 16mm head, A4 stainless grade, colour matched to Valcan panels (5 - 13mm grip range)	
4.8 x 26mm Multi-Grip Rivet with 16mm head, A4 stainless grade, colour matched to Valcan panels (13 - 21mm grip range)	
5.5 x 25mm Self Drilling Pan-head Fixing, A4 Grade Stainless, colour matched to Valcan panels	Cassette panels back to carrier rails.

# INSTALLATION ACCESSORIES

To ensure a successful installation and maximum warranty coverage, the proper installation of the VitraFix® cladding subframe system components is essential. To assist with your projects.

Valcan offers a range of accessories, including centralising tools, drill bits, and rivet adapters. In addition, Valcan provides on-site training for installers. To learn more, see page 16.

ACCESSORY DESCRIPTION	APPLICATION
Centralising Tool for VitraDual® Rivet Install - 7.0mm Floating Hole with 4.9mm Drill Bit	Ensures rivets are centred in the 'floating' rivet hole of the facade panel.
Centralising Tool for Ceramapanel® Rivet Install - 7.0mm Floating Hole with 4.9mm Drill Bit	
Replacement Drill Bit for Centralising Tool - 4.9mm	
Stepped Drill Bit - 7mm to 4.9mm	Allows drilling of aluminium panels & rail for 4.8mm diameter rivets at the same time.
Rivet Nose Piece Adapter for 16mm Dome Head Rivet*	Ensures rivets are not overtightened allowing thermal movement of panel.
Rivet Nose Piece Adapter for 16mm Flat Head Rivet*	
7.0mm Diameter Drill Bit for VitraDual® Floating Rivet Hole	Drill Bit for floating rivet hole in panel.
9.5mm Diameter Drill Bit for Ceramapanel® Floating Rivet Hole	
4.9mm Diameter Drill Bit for VitraDual® Fixed Rivet Hole	Drill bit for fixed rivet holes in panel.
4.9mm Diameter Drill Bit for Ceramapanel® Fixed Rivet Hole	





\*Fits most rivet guns (Bralo, Gesipa, Makita)

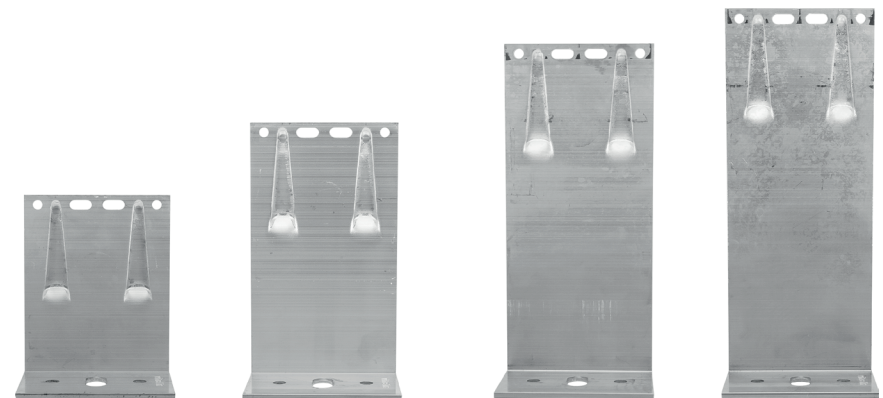


# VITRAFIX COMPONENTS

## BRACKETS, RAILS, FIXINGS, DRILL BITS & OTHER ACCESSORIES

PICTURE	PRODUCT NAME	SKU	OPTIONS
	100mm Single Bracket	VF100SB	-
	100mm Double Bracket	VF100DB	-
	140mm Single Bracket	VF140SB	-
	140mm Double Bracket	VF140DB	-
	180mm Single Bracket	VF180SB	-
	180mm Double Bracket	VF180DB	-
	200mm Single Bracket	VF200SB	-
	200mm Double Bracket	VF200DB	-

PICTURE	PRODUCT NAME	SKU	OPTIONS
	80mm Single Horizontal Adapter Bracket	VFHA	-
	Isolation Pad Single	VFIPSB	-
	Isolation Pad Double	VFIPB	-
<p> Customisable brackets are available in 5251 aluminium, sizes range from 50-350mm. See <a href="#">page 8</a> for more details.</p>			





PICTURE	PRODUCT NAME	SKU	OPTIONS
	Soffit Bracket	VF70AS/F	-
	Single Isolation Pad. Non-combustible	VFIPSB/NC	-
	Double Isolation Pad. Non-combustible	VFIPDB/NC	-
	T-Rail	VFTR50	6m 3m Cutting POA
	L-Rail	VFLR50	6m 3m Cutting POA
	U-Rail	VF2U9015/ VF2U17415	Aluminium / Galvanised Steel
	Top-Hat	Contact Us	-
	Z-Rail	Contact Us	-

PICTURE	PRODUCT NAME	SKU	OPTIONS
	VitraFix® Drill bits for Ceramapanel®	Contact Us	4.9mm / 9.5 mm
	VitraFix® drill bits for VitraDual®	Contact Us	4.9mm / 7.0mm
	VitraFix® Self Drill 4.8x25mm, 8mm Hex head	VFSD4.825	A2 or A4 Stainless Steel
	VitraFix® Self Drill 5.5x38mm, 8mm Hex head with washer	VFSD5.538	A2 or A4 Stainless Steel
	VitraFix® A4 Stain- less Steel Rivets	Contact Us	Colour Matching
	VitraFix® Centralising Tools	Contact Us	To suit 7mm / 9.5mm floating holes
	VitraFix® Nose Piece Adapters	Contact Us	Available for VitraDual® and Ceramapanel®



### TRAINING FOR INSTALLERS

Our on-site training is not only limited to teaching the proper installation process, but also provides hands-on experience and includes tips and tricks to make the installation process smoother and more efficient.

Our team of experts will provide hands-on guidance and answer any questions you may have, ensuring you leave with a complete understanding of the Valcan VitraFix® cladding subframe system.

We have found that when customers receive this level of training, installations will go through straight forwardly, resulting in customer satisfaction. To discuss product training in more detail, please get in contact with our team.

### GET A LIST OF COMPETENT INSTALLERS

At Valcan, we are proud to offer a professional network of experienced and fully trained installers for our VitraFix® and other cladding solutions. By connecting you with one of our recognised installers, you can have peace of mind that your needs will be met with the highest quality of service.

Whether you're looking for an installer in a specific location or interested in learning about the services they offer, we're here to help. Simply contact us for more information and we'll be happy to assist you.

Our goal is to ensure that you have a smooth and successful installation process, which is why we provide the support you need through our network of professional installers. Get in touch today to get started.

## TECHNICAL SUPPORT

We are dedicated to ensuring that you have the best possible experience with our cladding systems, which is why we offer technical support for the VitraFix® System. It's worth noting that final approval of the installation needs to be carried out by a professionally trained structural engineer.

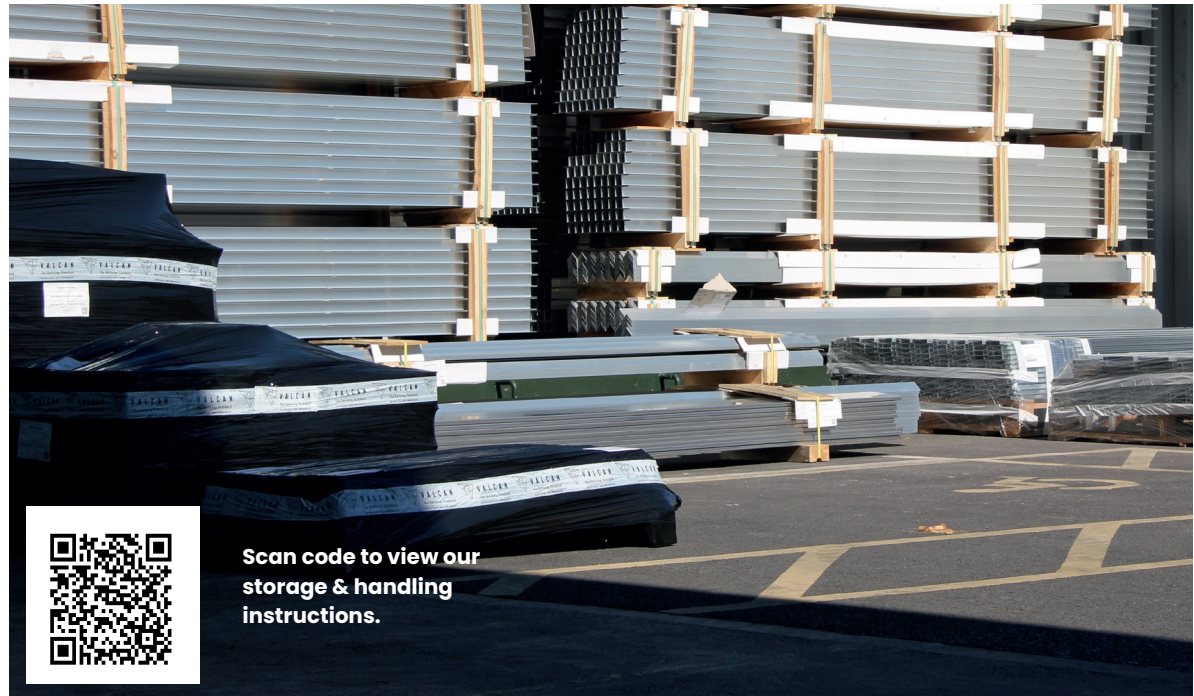
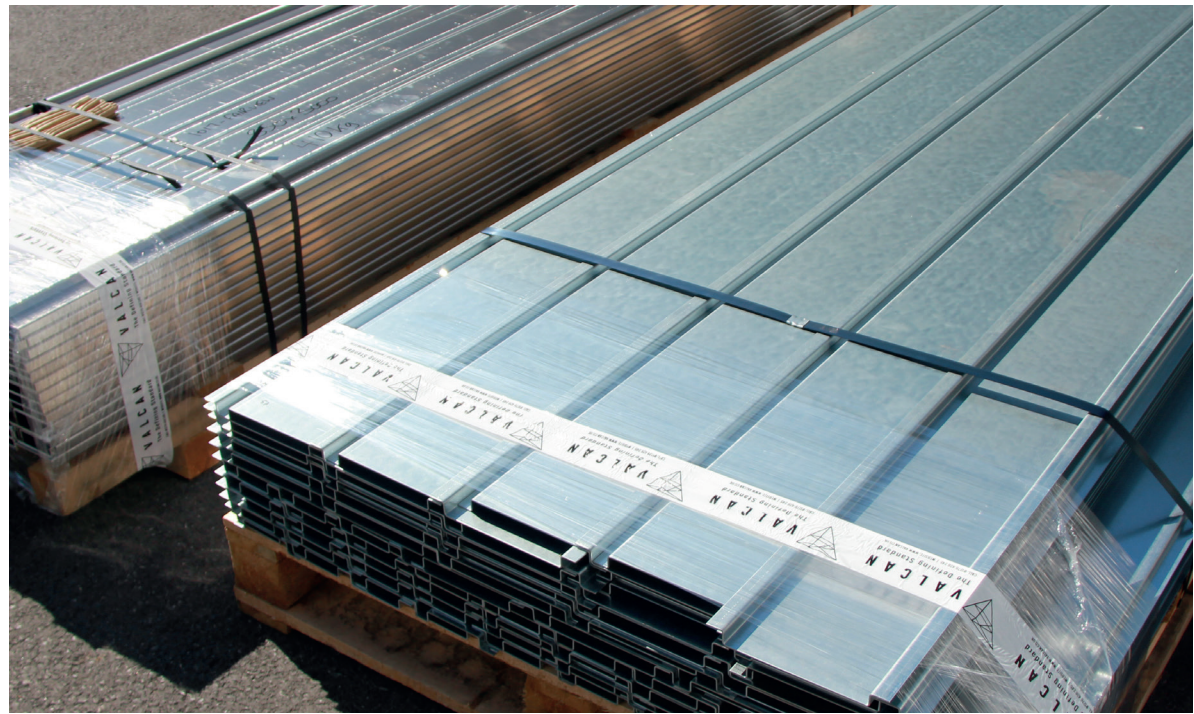
Whether you need help choosing the right configuration for your project or guidance on the installation process, our team of experts is here to help. If you have any questions or would like more information, please don't hesitate to reach out to us.

## HANDLING & STORAGE

To maintain the quality and finish of our aluminium products, it's important to follow industry best practices. Proper storage and handling of aluminium products is crucial to avoid oxidation and white rust formation.

Store all aluminium products indoors or under cover, away from chemicals to prevent oxidation. Maintaining a constant temperature is also important for the longevity of the aluminium as temperature inconsistencies can cause condensation and eventually lead to the spread of white rust on metal surfaces. To prevent this, ensure proper moisture control measures such as enclosing or covering the products free from holes where water could seep in.

For optimal protection, use a pallet that allows for air circulation and prevents ground contact. Cover the stock with a waterproof film, tarpaulin, or a similar cover. Check periodically for any build-up of water or condensation and make sure that the products are not left out overnight without proper cover or insulation. Ideally, store the goods in an enclosed area.



# SUSTAINABILITY AT VALCAN: LEADING THE CHARGE FOR A GREENER FUTURE



At Valcan, we don't just see sustainability as a duty to our environment, we see it as a distinctive business strategy and a dynamic opportunity to innovate.

Our dedication extends to constantly discovering creative ways to recycle and reuse materials, starting with our very own cladding panels.

We're particularly thrilled about our initiative of recycling previously installed cladding panels and re-purposing them into vital components of our VitraFix® cladding subframe system.

This strategic approach not only minimises waste but also enables cost-saving in production and contributes significantly to reducing our carbon footprint.

The cycle of sustainability begins with the careful disassembly of the older cladding panels composed of 5000 grade aluminium.

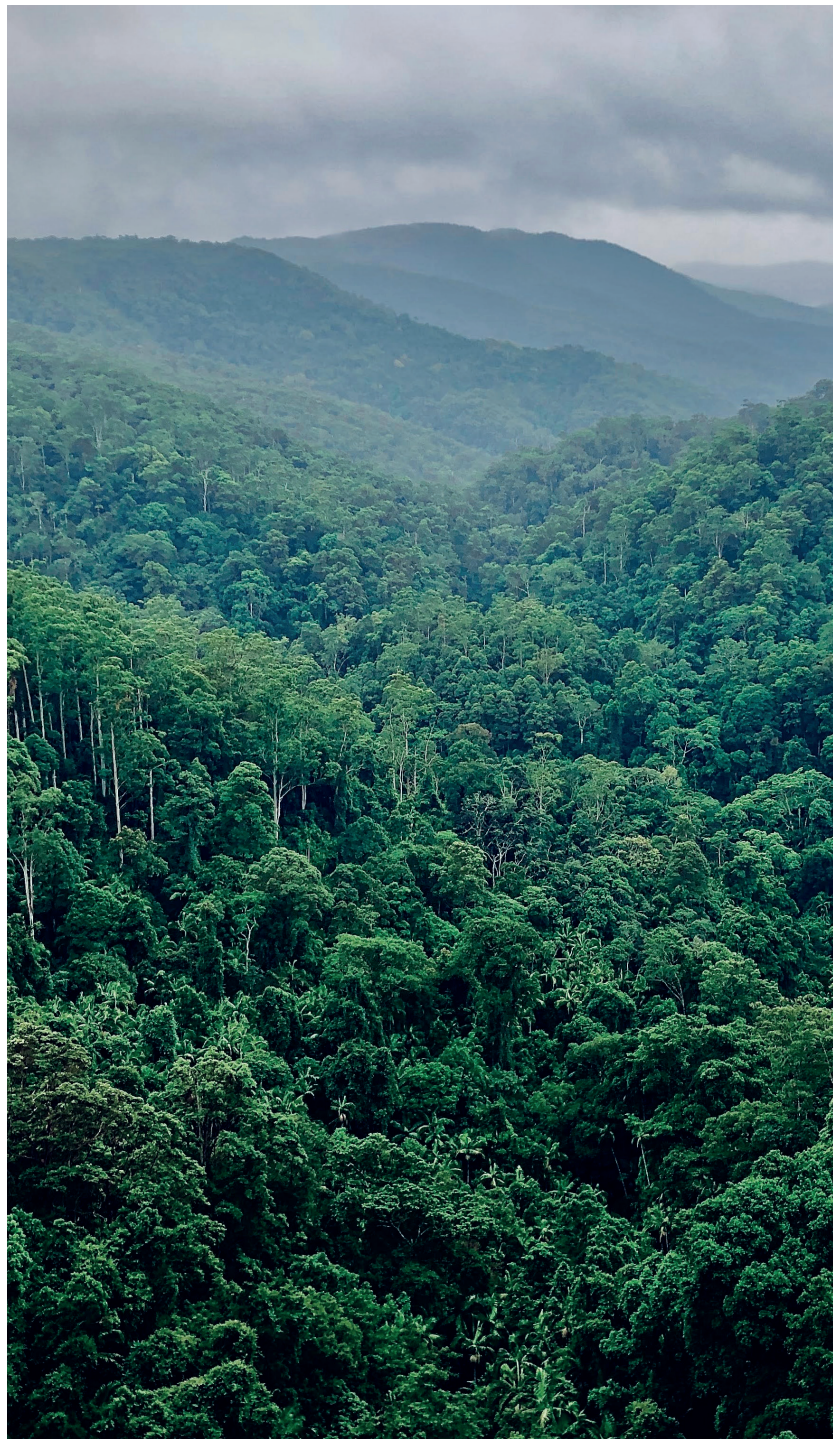
Once segregated, these reusable materials undergo processing and transformation into novel components for VitraFix®. Following this, each component is rigorously tested to meet our stringent quality standards.

Our sustainable methods do more than just helping us honour our commitment to the environment; they equip us to provide our customers with an environmentally friendly choice.

When clients select Valcan, they're assured that their cladding panels are not just robust and reliable, but they're also contributing to a greener planet with their choice of recycled materials.

Our pioneering stance in the cladding industry is a testament to our innovative strategies for waste reduction and our devotion to fostering sustainability.

As we continue to challenge ourselves in exploring new methods of recycling and reusing materials, our focus remains on diminishing our environmental impact and laying the groundwork for a sustainable future.



### Our Vision for a Greener Future:

At Valcan, our goal is to become a greener and more sustainable company by constantly evaluating and improving our operations. We aim to lead the charge in our industry by:

- Continually researching and implementing innovative, eco-friendly manufacturing processes.
- Promoting responsible sourcing of raw materials and engaging with suppliers who share our commitment to sustainability.
- Encouraging our employees to adopt sustainable practices, both at work and in their daily lives.
- Collaborating with industry partners to advocate for better environmental policies and standards.

By taking these steps, we hope to create a positive impact on the environment and inspire others within our industry to follow suit. Together, we can build a more sustainable future for generations to come.



### Partnership with Ecologi:

Valcan has joined forces with Ecologi, a forward-thinking organisation that plants trees and supports community projects worldwide. Through this partnership, we are offsetting our carbon emissions, contributing to reforestation efforts, and investing in global sustainability projects.

### Recycling Program for Aluminium Panels:

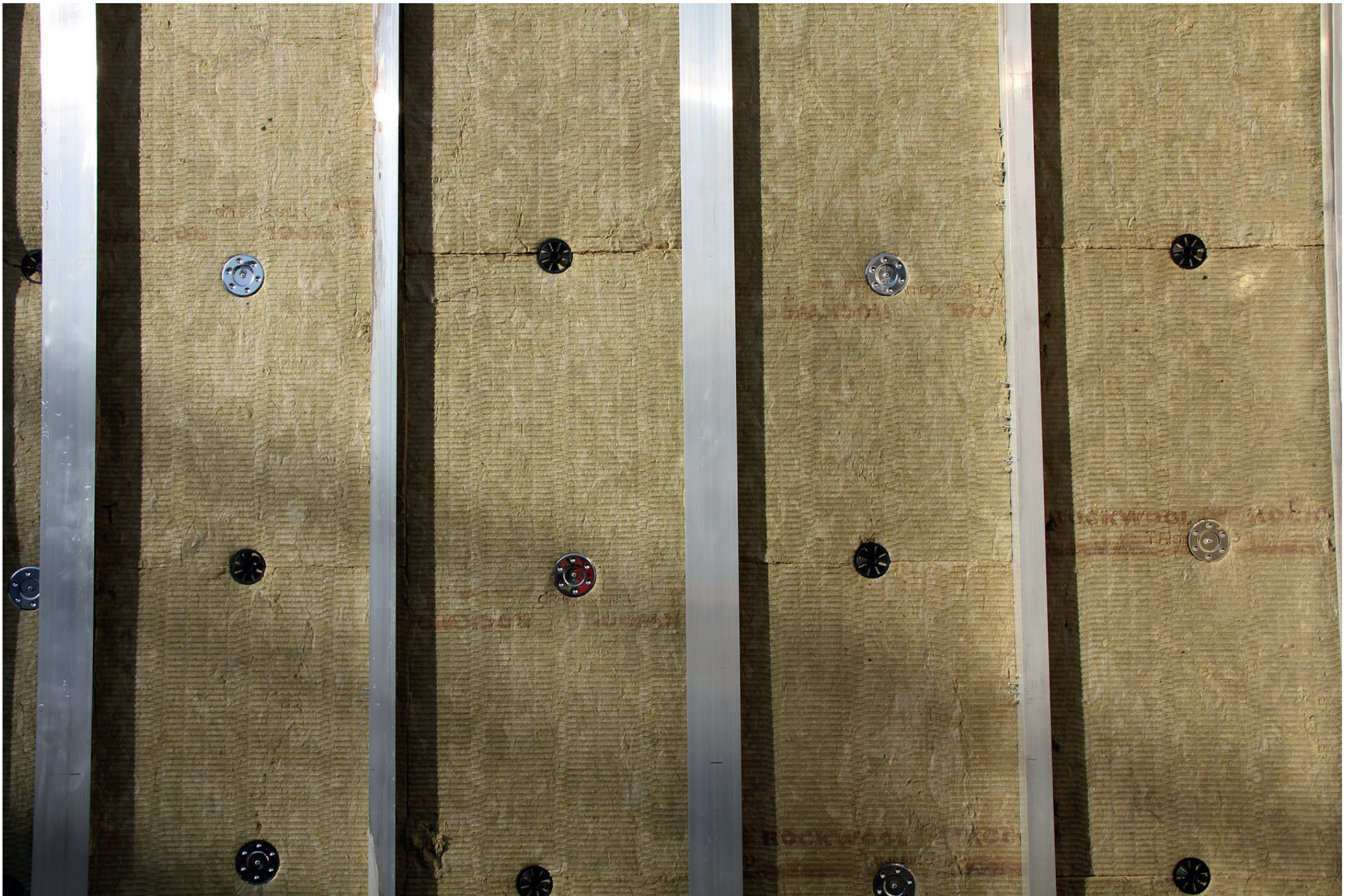
We believe in the power of recycling and have implemented a recycling program for our aluminium panels. Customers can return old or damaged panels to us, and we will recycle the materials, ensuring that resources are utilised efficiently where waste is minimised.

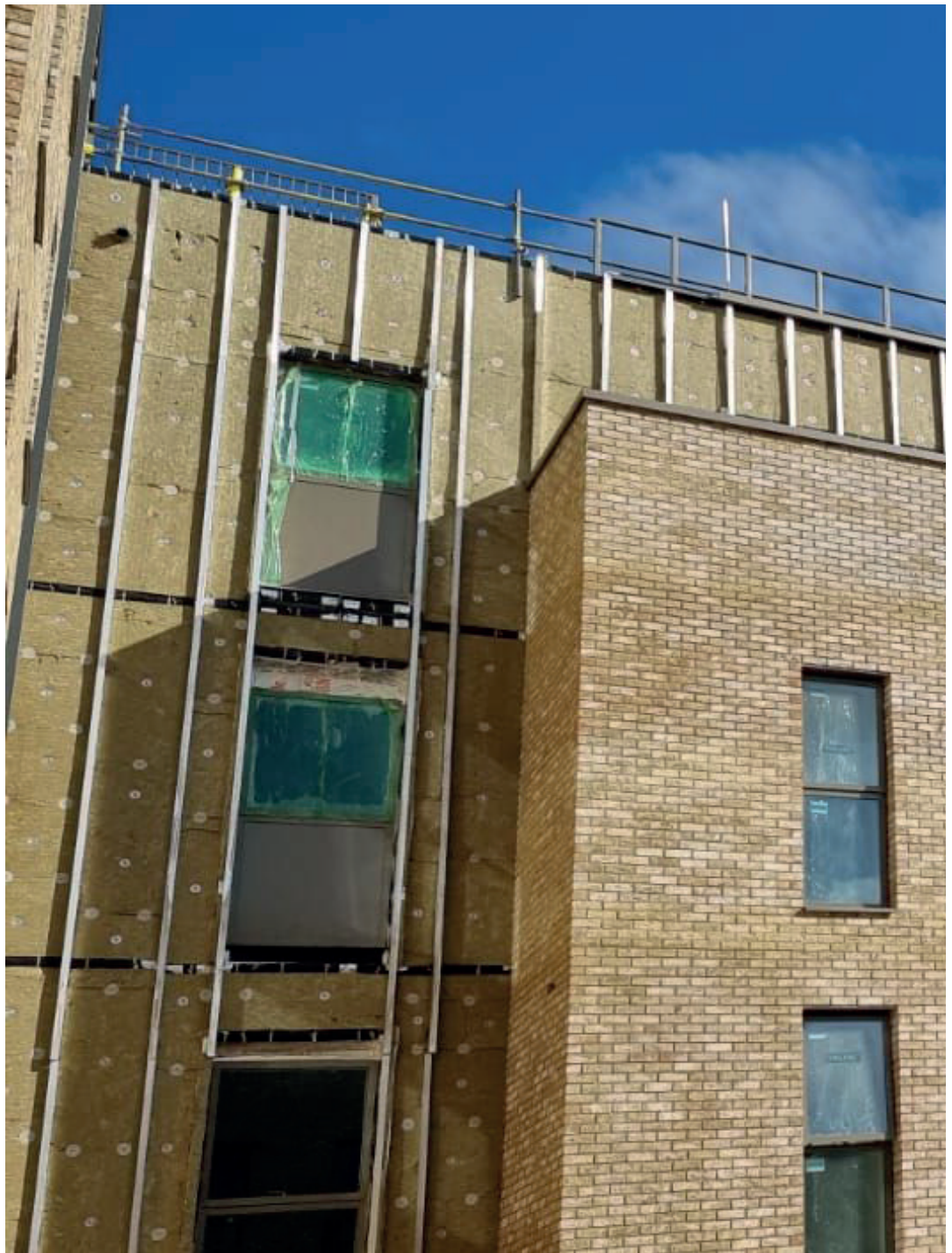
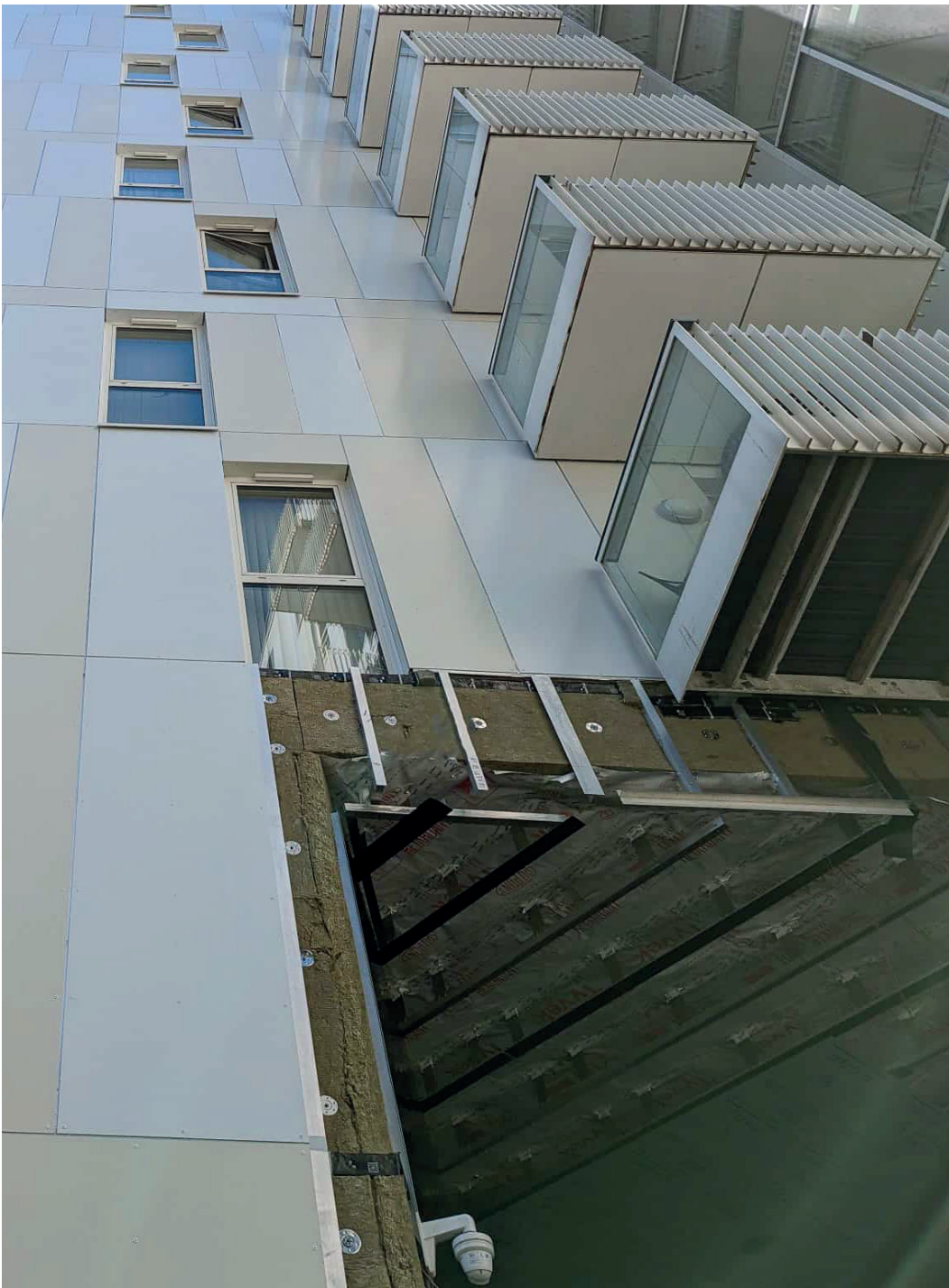


# INSTALLATION SUPPORT

We understand the importance of site visits and quality assurance. If needed, we are happy to arrange a site visit to provide on-site guidance and ensure that the installation is progressing smoothly. Alternatively, we are more than willing to review photographs of the installation to offer remote assistance and double-check any crucial details.

Our aim is to make the installation process as straightforward as possible. With our support, training, technical assistance, and comprehensive resources, you can trust that our cladding systems are designed for ease of installation. We are dedicated to your success, and we go the extra mile to ensure your project is completed to the highest standards.







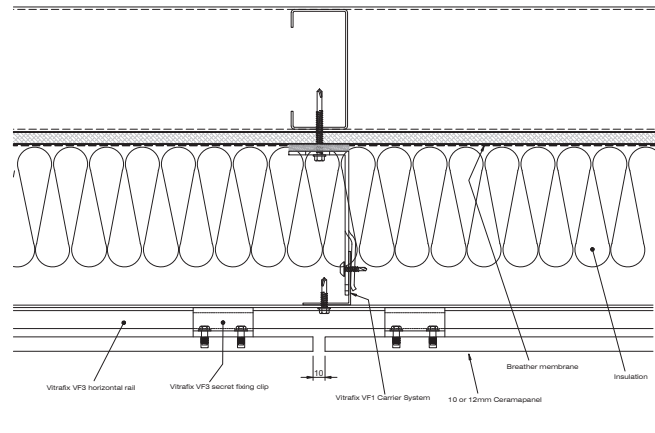
# TYPICAL DRAWING EXAMPLES

Tailored for architects and installation professionals, these drawings vividly demonstrate the seamless integration of our systems with a variety of panel options, including non-combustible fibre cement, aluminium, vitreous enamel, and extruded porcelain panels.

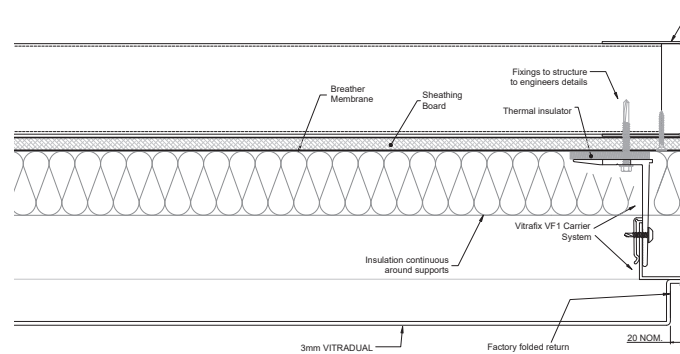
Our drawings illustrate the precise installation process, ensuring a secure and visually striking result with every panel, or fixing type. Whether you're working with the rugged durability of fibre cement (Ceramapanel®) or the sleek elegance of aluminium (VitraDual®), our drawings provide a clear and informative guide for implementing our VitraFix® cladding systems.

You can find our typical drawings on our website on each of the product pages. If you're looking for alternative fixing systems you can request them by contacting us direct on 01278 428 245 or emailing [enquiries@valcan.co.uk](mailto:enquiries@valcan.co.uk)

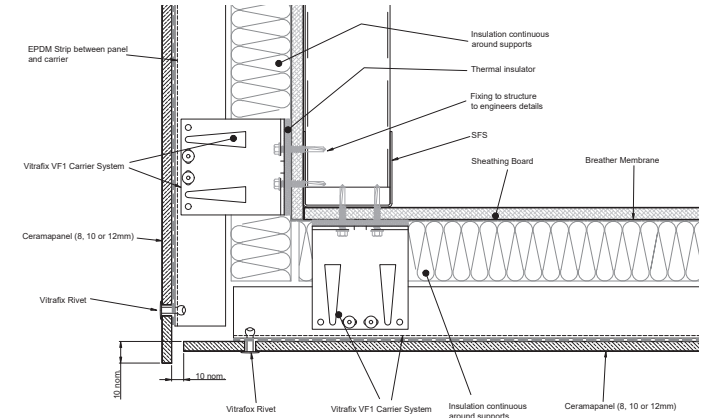
**CERMAPANEL® VITRAFIX VF3 VERTICAL JOINT**



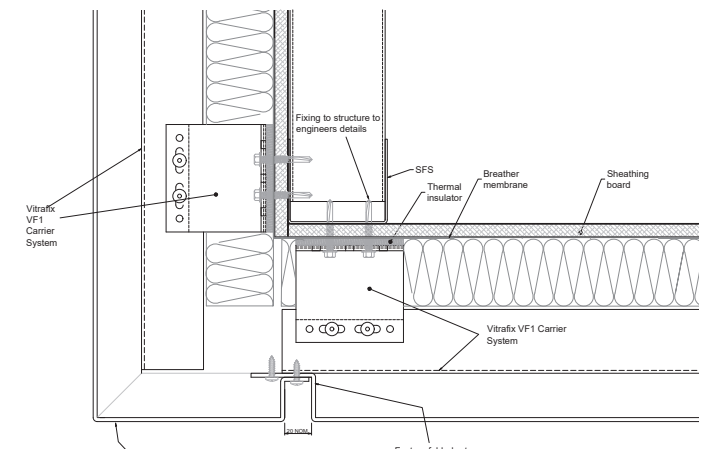
**VITRADUAL® CASSETTE FIX ON MASONRY WALL**



**CERMAPANEL® RIVET FIX SOFFIT JUNCTION DETAIL**



**VITRADUAL® CASSETTE FIX SOFFIT JUNCTION DETAIL**



# PROJECTS

## VALCAN | VITRAFIX® SUBFRAME SYSTEM INSTALLED



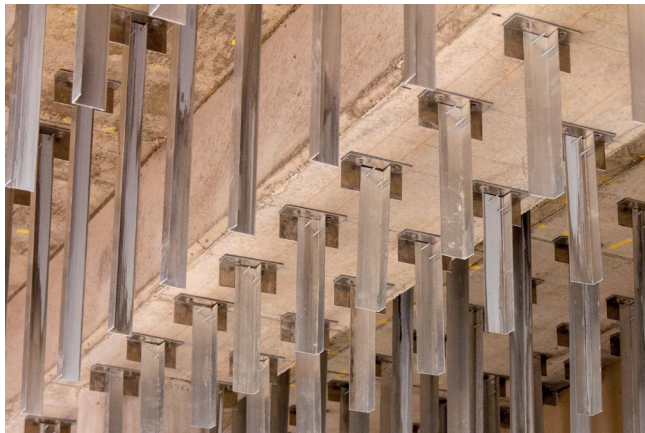
Amersham Vale | London

Vernon Tower | Stockport

Burroughs Wharf | London

We are proud to have completed numerous projects that feature the VitraFix® cladding support system. Our team of experts has years of experience installing and working with this system, ensuring a high-quality finish on every project.





Addington Valley School | Croydon

RUH Dyson Cancer Centre | Bath

The Bridge School | London

If you're interested in seeing the results of some of our previous projects, visit our website at [www.valcan.co.uk/projects](http://www.valcan.co.uk/projects) for more information and in-depth details.



**vitrafix**<sup>®</sup>  
Cladding Subframe System



**V A L C A N**

**The Defining Standard**

T: +44(0)1278 428 245

E: [enquiries@valcan.co.uk](mailto:enquiries@valcan.co.uk)

W: [www.valcan.co.uk](http://www.valcan.co.uk)

Dunball House,  
Woodlands Court Business  
Park,  
Bristol Rd,  
Bridgwater, Somerset  
TA6 4FJ